



2018  
CATALOG  
**MAPLE  
EQUIPMENT**

# IT'S A MATTER OF CULTURE!



This year once more our maple production team pursues its growth to serve you better. Today more than 50 distributors located in Canada and in North-Eastern United States work to maintain this customer-relationship that has been uniting us for many years now. In order to make our products even more available for our distributors, we have opened two distribution centers: one in the Beauce region and the other one in the Temiscouata region, a place of great agricultural potential.

We are very proud to offer more than 40 new products this year, among which 29 are manufactured by our team at our Ham-Nord plant. Innovation is still a major driving force to our growth, as shown by the increasing enthusiasm of the maple production industry towards the High Brix technology, patented by H2O Innovation in 2016. The Smartrek™ technology, that has generated the installation of more than 12,000 housings in the woods over the last 4 years, is more and more popular and proves to be a must-have in the improvement of maple syrup output.

Our team works on two priorities which will guarantee us a sustained growth: integrity and service. For that matter the recall of our Smartrek™ sensors last year gives evidence that our organization definitely wants to offer you trustworthy equipment, even in case of default.

For us, quality, customer satisfaction, honesty and transparency are a matter of corporate culture. Only this way do we consider business. This is how H2O Innovation makes sure of its durability and a sustained growth.

We are thankful for your continued trust.

Frédéric Dugré  
President & CEO





SPOUTS & FITTINGS



6

\* = NEW PRODUCT

*Initiation to sugar making	7
3/16 Spouts & fittings	8
5/16 Spouts & fittings	9

H2O-SMARTREK™



20

Starting kit	22
Vacuum sensors	22
Various sensors	23
*Water meters	24
*Cameras	26
*Web page	28
End of season report	29

MAPLE SAP EXTRACTORS



38

Continuous vacuum extractors	39
Transfer tanks	42
Mechanical extractors	43
Turnkey projects	45
*Case study La Tuque	46

MAIN-LINE & TUBING



12

5/16 Tubing	13
Main-line	13
3/16 Tubing	14
Tensil	15
5/16 & 3/16 pre-cut drops	16
*Stainless steel adapters	17
Plastic adapters	19

TOOLS



30

LOAC Tools	31
*New LOAC / Pruno tools	32
Accessories	33
Pliers	34
Miscellaneous tools	35
3/16 Tools	36
Drill bits	37

PUMPS (WATER & VACUUM)



48

*KWIK pumps EM & DVV	49
Mini Vac & accessories	50
Travaini pumps	51
Overpressure pumps	52
*Atlas Copco	54

TANKS



56

A solution to the VR5	57
48" width	58
62" width	59
72" width	60
95.5" width	61

REVERSE OSMOSIS FILTRATION



62

*Clarifying machine (UF)	63
*NGMP osmosis	64
Mini-RO 4, 8 & Concentrator	65
Econox & Supra	66
*High Brix	68
Chemical maintenance products	75

EVAPORATORS



78

The Rookie	79
*NGMP evaporators	80
The Tradition	81
The Tsunami	82
The Classic	83
Oil finishing rig	84

FINISHING



90

*Filter presses, 20" & NGMP	91
Accessories	93
Syrup tanks & double-boiler	94
Barrels & brushes	95
Measuring instruments	97
*Bottles & cans	99
Syrup bottling machine	101

PVC FITTINGS & ACCESSORIES



102

H2O Innovation has a complete line of plumbing accessories available, consult our web site at [h2oinnovation.net](http://h2oinnovation.net) or call us!  
CAN: 819.344.2288 & USA: 802.868.6732

Valves	103
--------	-----

H2O INNOVATION DISTRIBUTION



104

Canadian distributors	104
American distributors	106
YouTube channel	109
Sales & service team	110
Web site	111

# SPOUTS & FITTINGS

H2O Innovation's fittings with the logo mentioning "without micro leaks" have been made with a different process, which has as benefit of having no plastic molding line on the last barb. A while ago, when producers used less effective vacuum pumps, this detail was not important. Although, since a few years, vacuum pumps are much more performing therefore it is essential to avoid any kind of leaks, as small as they come!



# INITIATION TO SUGAR MAKING

ERA-SIROP10

Aspiring maple producer kit - 10 taps

\$164.95

ERA-SIROP25

Aspiring maple producer kit - 25 taps

\$294.95

- Complete kits for aspiring maple producer (10 or 25 taps)

**INCLUDES:**

- Bucket - 2 imp. gal.
- Covers
- 5/16" spouts
- H2O high-quality drill
- Orlon syrup filter
- 3 Acero bottles with caps
- Candy thermometer
- Initiation guide
- H2O Innovation hat



ERAPB-TSS

5/16" Tree Saver spout

\$1.25

**Characteristics**

- Available in packs of 10 and 100 5/16" Drill bit



ERAPB2-PSB

Sap bucket - 2 imperial gallons

\$3.75

**Characteristics**

- 8 3/4" diameter x 12" depth
- 25 pcs. per pack
- Box size : 9 1/2" x 9 1/2" x 55"
- Weight : 19 pounds



ERAPB-PSBL-2

Sap bucket cover

\$2.75

**Characteristics**

- 12" x 12" (with stainless steel fastening)
- 25 units per package
- Box dimensions: 12 1/2" x 12 1/2" x 11"
- Weight: 15 lb



ERAH2OLT516

LT-516 lifelong spout

\$3.00

**Characteristics**

- Made in stainless steel 304
- Punch 5/16"
- Works with sap sacks and/or buckets

# 3/16" SPOUTS

WITHOUT MOLDING LINE  
WITHOUT COMPROMISE 



ERAH20705-3B

Blue spout 19/64", 3/16" connection

\$0.21



LEA4100-3

Union hook, 3/16" connection

\$0.34

**NEW**



ERAH20712

Tee-drop 3/16", for lateral 5/16"

\$0.35

Thanks to the brand-new Tee 712 a 3/16 drop can now be used on a 5/16 gathering system. The gravity generated in the drop will allow the vacuum level to increase at the spout. Each inch of mercury is important.



ERAH20705-3

Black spout 19/64", 3/16" connection

\$0.21



ERAH20715-3

Female tee-plug, 3/16" connection

\$0.30



ERAH20715R-3

Red tee-plug blocked 3/16"

\$0.36



ERAH20720-3

Reduced elbow 5/16" to 3/16"

\$0.36



ERAH20815-3

Slide fitting for 3/16" tubing

\$0.45



ERAH20820-3

Elbow saddle kit 3/4" for 3/16" tubing (drill 15/32")

\$1.99

ERAH20821-3

Elbow saddle kit 1" for 3/16" tubing (drill 15/32")

\$1.99

ERAH20822-3

Elbow saddle kit 1 1/4" for 3/16" tubing (drill 15/32")

\$1.99

## 3/16" BENEFITS

- Creates a natural vacuum
  - Inexpensive installation: no need for an extractor nor a vacuum pump
  - Possibility to obtain a vacuum of up to 27 inHg
- 3 main criteria to obtain a natural vacuum:**
- Have a leak-free line
  - Have an elevation between the first tap and the main line
  - Have a height difference to create the suction effect (a minimum of 30 ft. is necessary to create the high vacuum effect)



# 5/16" SPOUTS

WITHOUT  
MOLDING LINE  
WITHOUT  
COMPROMISE



ERAH20704

Black Du-Eau spout 19/64"

\$0.26



ERAH20704B

Blue Du-Eau spout 19/64"

\$0.27



**NEW**

19/64" Colored spout

ERAH20705	Black	\$0.18
ERAH20705B	Blue	\$0.19
ERAH20705V	Green	\$0.20
ERAH20705O	Orange	\$0.20
ERAH20705R	Pink	\$0.20
ERAH20705C	Clear	\$0.18
ERAH20705W	White	\$0.20



1/4"

ERAH20708

Black spout 1/4", 5/16" connection

\$0.19



1/4"

ERAH20708B

Blue spout 1/4", 5/16" connection

\$0.20



ERAH20713

Long female tee-plug

\$0.36



ERAH20813

Union hook 5/16"

\$0.23



ERAH20815

Slide fitting for 5/16" tubing

\$0.42



ERAH2081525

Hook for slide fitting

\$0.24



ERAH20817

Black elbow hook for end line

\$0.40



ERAH20820 /821 /822

Elbow saddle kit 3/4", 1" or 1 1/4" (drill 15/32")

\$1.99

# 5/16" SPOUTS



ERA41271959

Manifold plug 15/32" to 31/64"

\$0.77



ERAH20702C

Clear reducing female spout 7/16" to 19/64", seasonal

\$0.20



ERAH20703C

Clear reducing female spout 19/64", seasonal

\$0.20



ERAH20705C

Clear spout 19/64", seasonal

\$0.18



ERAH20705CUV

Clear UV spout 19/64", seasonal

\$0.19



ERAH20706C

Straight clear spout 19/64", seasonal

\$0.14



ERAH20707C

Straight clear spout 1/4", seasonal

\$0.14



ERAH20713R

Long female tee-plug blocked - red

\$0.44



ERAH20714

Male tee-plug

\$0.28



ERAH20714R

Male tee-plug blocked - Red

\$0.34



ERAH20715

Female tee-plug 5/16"

\$0.28



ERAH20715R

Female tee-plug blocked - Red

\$0.34

# 5/16" SPOUTS



LEA4712

Clear check valve spout

\$0.65



LEA4711

Check valve adapter

\$0.65



LEA4715

Plastic stubby spout

\$0.54



ERAH20718

Female tee-plug 5/16" with plug adapter

\$0.30



ERAH20720

Elbow 5/16"

\$0.31



ERAH20736

Female plug 5/16"

\$0.21



ERAH20829

Saddle 5/16"

\$0.99



ERAH20883

Rubber for manifold plug

\$0.25



ERAH20825

Saddle clamp 3/4"

\$0.85

ERAH20826

Saddle clamp 1"

\$0.85

ERAH20827

Saddle clamp 1 1/4"

\$0.85



ERAMJM753

3-branch star 5/16 x 1/2" NPT

\$2.75



ERAMJM756

Saddle elbow screw

\$2.80

VISZINC8-18X1TYPEBHEX

Saddle elbow screw

\$0.10

The background of the entire page is a photograph of several large stacks of coiled irrigation tubing. The tubing is a light, yellowish-tan color and is bundled together with white plastic ties. The stacks are arranged in rows, and the lighting is warm, creating a golden glow over the scene. The focus is sharp on the middle stacks, with the foreground and background slightly blurred.

## MAIN-LINE & TUBING

The H2O main line is now offered in 2 materials. Made of polyethylene specially developed for maple farms, the regular model has always been installed by producers. The new MD (Medium Density) model has less material but denser wall. This product is thus more affordable and just as reliable. It offers a greater resistance to pressure, but its use is not recommended in cold climates.

The H2O Innovation tubing range offers a variety of models for all tastes. As its name suggests, the Flex 15-year guarantee is more flexible and benefits from an excellent memory. It will quickly get back to its initial position following an incident. The Flex is now offered in blue or grey. The Semi-rigid green 10-year guarantee is more rigid than the Flex, thus better supporting ice or snow loads.

## Tubing

### H2O Innovation 5/16" tubing

60 rolls per pallet

Product No.	Description
ERATUY5/16H2OFLEX	Blue H2O Innovation flex tubing, 5/16", 500 ft., 15 years
ERATUY5/16G7	Green H2O Innovation semi-rigid tubing, 5/16", 500 ft., 10 years
ERATUY5/16H2OSF-M	Purple H2O Innovation semi-flex tubing 5/16", 500 ft., 10 years
ERATUY5/16H2OSR-V	Green H2O Innovation semi-rigid tubing, 5/16", 500 ft., 8 years
ERATUY5/16H2OSR-BR	Royal blue H2O Innovation semi-rigid tubing, 5/16", 500 ft., 8 years
ERATUY5/16H2OFLEX-GRIS	Grey H2O Innovation flex tubing, 5/16", 500 ft., 15 years



**NEW**



ERATUY5/16H2OFLEX-GRIS

### MD Main-line

The medium density (MD) main line offered by H2O Innovation is an in-between the regular and HD main line. Its rigidity makes it an affordable option and its flexibility is ideal for all type of installations.

### Black MD Main-line

Product No.	Description
ERATMLMD007NR	¾" 140 psi black - roll 500'
ERATMLMD007NB	¾" 140 psi black - spool 2 500'
ERATMLMD010NR	1" 140 psi black - roll 500'
ERATMLMD010NB	1" 140 psi black - spool 2 000'
ERATMLMD012NR	1 ¼" 140 psi black - roll 500'
ERATMLMD012NB	1 ¼" 140 psi black - spool 1 000'
ERATMLMD015NR	1 ½" 140 psi black - roll 500'
ERATMLMD015NB	1 ½" 140 psi black - spool 900'
ERATMLMD020NR	2" 140 psi black - roll 250'
ERABOB	Empty spool (returnable if in good condition)



### Blue MD Main-line

Product No.	Description
ERATMLMD007BR	¾" 140 psi blue - roll 500'
ERATMLMD007BB	¾" 140 psi blue - spool 2 500'
ERATMLMD010BR	1" 140 psi blue - roll 500'
ERATMLMD010BB	1" 140 psi blue - spool 2 000'
ERATMLMD012BR	1 ¼" 140 psi blue - roll 500'
ERATMLMD012BB	1 ¼" 140 psi blue - spool 1 000'
ERATMLMD015BR	1 ½" 140 psi blue - roll 500'
ERATMLMD015BB	1 ½" 140 psi blue - spool 900'
ERATMLMD020BR	2" 140 psi blue - roll 250'
ERABOB	Empty spool (returnable if in good condition)



## Main-line

H2O Innovation's high-quality tubing is designed to meet maple producers' standards. The slick material that is used reduces the development of bacteria and facilitates cleaning. The blue main line does not warm up as fast as the black main line, thus slowing bacteria growth. Laced tubing option available upon request.

### Black Main-line

Product No.	Description
ERATML007NR	¾" 100 psi black - roll 500'
ERATML007NB	¾" 100 psi black - spool 2,500'
ERATML010NR	1" 100 psi black - roll 500'
ERATML010NB	1" 100 psi black - spool 2,000'
ERATML012NR	1 ¼" 100 psi black - roll 500'
ERATML012NB	1 ¼" 100 psi black - spool 1,000'
ERATML015NR	1 ½" 100 psi black - roll 500'
ERATML015NB	1 ½" 100 psi black - spool 900'
ERATML020NR	2" 100 psi black - roll 250'
ERABOB	Empty spool (returnable if in good condition)



Laced main-line optional

### Blue Main-line

Product No.	Description
ERATML007BR	¾" 100 psi blue - roll 500'
ERATML007BB	¾" 100 psi blue - spool 2,500'
ERATML010BR	1" 100 psi blue - roll 500'
ERATML010BB	1" 100 psi blue - spool 2,000'
ERATML012BR	1 ¼" 100 psi blue - roll 500'
ERATML012BB	1 ¼" 100 psi blue - spool 1,000'
ERATML015BR	1 ½" 100 psi blue - roll 500'
ERATML015BB	1 ½" 100 psi blue - spool 900'
ERATML020BR	2" 100 psi blue - roll 250'
ERABOB	Empty spool (returnable if in good condition)



120 rolls per pallet

### 3/16" H2O Innovation tubing

Product No.	Description
ERATUY3/16H2OG-V	H2O Innovation semi-rigid tubing, 3/16", 500 ft., 8 years

#### Characteristics

- Designed to meet the highest standard  
Flexible and watertight  
Grips to all types of H2O Innovation spouts  
Regains its shape after being stretched



ERATUY3/16H2OG-V

## Main-line support wire

Product No.	Dimensions	Price
ERABRCAR9-50	# 9 - 50 lb aluminium clad steel	\$95.00
ERABRCARGALV9-50	# 9 - 50 lb clad steel - galvanized	\$70.00
ERABRUNI9-50	# 9 - 50 lb steel - galvanized - 900 ft. approx.	\$60.00



ERABRUNI9-50

## Hauban wire

Product No.	Dimensions	Price
ERABRUNI12-10	# 12 - 10 lb - 345 ft. approx.	\$14.00
ERABRUNI12-50	# 12 - 50 lb - 1,735 ft. approx.	\$65.00
ERABRUNI14-10	# 14 - 10 lb - 580 ft. approx.	\$15.00
ERABRUNI14-50	# 14 - 50 lb - 2,465 ft. approx.	\$68.00



ERABRUNI12-50

### Characteristics

- Galvanized

## Splice

Product No.	Dimensions	Price
ERAPEISS9	Splice for # 9 wire (per pair)	\$4.50
ERAPEISS10	Splice for # 10 wire (per pair)	\$4.50
ERAEPIT9	Head splice # 9 (per unit)	\$3.80
ERAEPIT-10	Head splice # 10 (per unit)	\$3.80
ERAGRIP9	Gripping # 9 1,200 lb	\$4.25
ERA412PINGRIP	Gripping pliers	\$142.00



ERAPEISS9



ERA412PINGRIP



ERAGRIP9

## H2O Innovation tube pre-cut for drops

Product No.	Description	Qty. per box	Price /unit
ERACHUTASS	Drops assembly	-	\$0.14
ERATUYCH24FB	Tube for drops 5/16" X 24" 15 years	350	\$0.28
ERATUYCH28FB	Tube for drops 5/16" X 28" 15 years	350	\$0.32
ERATUYCH30FB	Tube for drops 5/16" X 30" 15 years	350	\$0.35
ERATUYCH32FB	Tube for drops 5/16" X 32" 15 years	350	\$0.37
ERATUYCH34FB	Tube for drops 5/16" X 34" 15 years	350	\$0.38
ERATUYCH36FB	Tube for drops 5/16" X 36" 15 years	350	\$0.42
ERATUYCH38FB	Tube for drops 5/16" X 38" 15 years	350	\$0.42
ERATUYCH24GV-3	Tube for drops 3/16" X 24" 15 years	700	\$0.21
ERATUYCH30GV-3	Tube for drops 3/16" X 30" 15 years	700	\$0.27
ERATUYCH36GV-3	Tube for drops 3/16" X 36" 15 years	700	\$0.32



### Characteristics

- Flexible and watertight  
Excellent adhesion to many H2O Innovation fittings  
Sold in boxes, the pre-cut drops have the  
ADVANTAGE TO BE STRAIGHT SO THERE'S NO CURBS

## Quick union insertion in stainless steel

Product No.	Description	Price /unit
SPH153610	1"	\$60.00
SPH153612	1" 1/4	\$60.00
SPH153615	1" 1/4	\$65.00
SPH153620	2"	\$68.00



## 100% Stainless steel heavy duty clamp

Product No.	Description	Price / unit
COLRHAS016	1"	\$3.60
COLRHAS020	1" 1/4	\$3.90
COLRHAS024	1" 1/2	\$4.50
COLRHAS040	2"	\$5.50





## Stainless steel Y

Product No.	Dimensions	Price
ERARACYSS07	3/4"	\$22.82
ERARACYSS10	1"	\$26.38
ERARACYSS12	1" 1/4	\$28.55
ERARACYSS15	1" 1/2	\$29.98
ERARACYSS20	2"	\$37.43
ERARACYSS100707	1" x 3/4" x 3/4"	\$44.59
ERARACYSS101007	1" x 1" x 3/4"	\$26.25
ERARACYSS121010	1" 1/4 x 1" x 1"	\$43.81
ERARACYSS121207	1" 1/4 x 1" 1/4 x 3/4"	\$29.40
ERARACYSS121210	1" 1/4 x 1" 1/4 x 1"	\$30.18
ERARACYSS151010	1" 1/2 x 1" x 1"	\$47.35
ERARACYSS151212	1" 1/2 x 1" 1/4 x 1" 1/4	\$47.35
ERARACYSS151510	1" 1/2 x 1" 1/2 x 1"	\$30.18
ERARACYSS151512	1" 1/2 x 1" 1/2 x 1" 1/4	\$31.95
ERARACYSS202010	2" x 2" x 1"	\$41.78
ERARACYSS202012	2" x 2" x 1" 1/4	\$43.55
ERARACYSS202015	2" x 2" x 1" 1/2	\$44.11



ERARACYSS07



ERARACYSS101007

## Stainless steel sleeves

Product No.	Dimensions	Price
ERARACMANSS07	3/4"	\$4.62
ERARACMANSS10	1"	\$4.93
ERARACMANSS12	1" 1/4	\$5.32
ERARACMANSS15	1" 1/2	\$6.08
ERARACMANSS20	2"	\$10.72
ERARACMANSS1007	1" x 3/4"	\$14.12
ERARACMANSS1210	1" 1/4 x 1"	\$15.49
ERARACMANSS1510	1" 1/2 x 1"	\$17.13
ERARACMANSS1512	1" 1/2 x 1" 1/4	\$16.05
ERARACMANSS2010	2" x 1"	\$25.98
ERARACMANSS2012	2" x 1" 1/4	\$24.80
ERARACMANSS2015	2" x 1" 1/2	\$24.80



ERARACMANSS1007

## Stainless steel tee

Product No.	Dimensions	Price
ERARACTSS07	Stainless steel tee 3/4"	\$27.00
ERARACTSS10	Stainless steel tee 1"	\$26.47
ERARACTSS12	Stainless steel tee 1" 1/4	\$31.84
ERARACTSS15	Stainless steel tee 1" 1/2	\$32.49
ERARACTSS20	Stainless steel tee 2"	\$44.11
ERARACTSS100707	Stainless steel tee 1" x 3/4" x 3/4"	\$43.81
ERARACTSS101007	Stainless steel tee 1" x 1" x 3/4"	\$26.25
ERARACTSS121010	Stainless steel tee 1" 1/4 x 1" x 1"	\$42.95
ERARACTSS121207	Stainless steel tee 1" 1/4 x 1" 1/4 x 3/4"	\$29.40
ERARACTSS121210	Stainless steel tee 1" 1/4 x 1" 1/4 x 1"	\$30.18
ERARACTSS151010	Stainless steel tee 1" 1/2 x 1" x 1"	\$47.35
ERARACTSS151212	Stainless steel tee 1" 1/2 x 1" 1/4 x 1" 1/4	\$47.35
ERARACTSS151510	Stainless steel tee 1" 1/2 x 1" 1/2 x 1"	\$30.18
ERARACTSS151512	Stainless steel tee 1" 1/2 x 1" 1/2 x 1" 1/4	\$31.95
ERARACTSS202010	Stainless steel tee 2" x 2" x 1"	\$41.78
ERARACTSS202012	Stainless steel tee 2" x 2" x 1" 1/4	\$43.55
ERARACTSS202015	Stainless steel tee 2" x 2" x 1" 1/2	\$44.11



ERARACTSS07

## Tee for star with 1/2" NPTF output

Product No.	Dimensions	Price
ERARACESS07	3/4"	\$26.83
ERARACESS10	1"	\$26.83
ERARACESS12	1" 1/4	\$32.27
ERARACESS15	1" 1/2	\$32.58
ERARACESS20	2"	\$39.01



ERARACESS10

## Stainless Steel Male Adapters, Ins. x MPT

Product No.	Dimensions	Price
ERARACADA07	3/4"	\$15.05
ERARACADA10	1"	\$18.15
ERARACADA12	1" 1/4	\$18.58
ERARACADA15	1" 1/2	\$20.12
ERARACADA20	2"	\$27.85



ERARACADA12

## Stainless steel H

Product No.	Dimensions	Price
ERARACRACHSS10	1"	\$56.10
ERARACRACHSS1215	1 1/4" x 1 1/4" x 1 1/2" x 1 1/2"	\$61.20
ERARACRACHSS1520	1 1/2" x 1 1/2" x 2" x 2"	\$78.23



ERARACRACHSS1215

## Standards & longs adapters for tanks

Product No.	Dimension (Diameter X by Length)	Price
ERARACABSS15X1	Tank adapter 1 1/2" x 1" long	\$100.11
ERARACABSS15X2	Tank adapter 1 1/2" x 2"(*) long	\$111.33
ERARACABSS2X25	Tank adapter 2" x 2 1/2" long	\$124.86

### Characteristics

- Two NPTF thread; one on each side to go with fittings under basin and threaded caps or others inside basin.



ERARACAB15X2

## Forks for 5/16" (stainless steel)

Product No.	Dimensions	Price
ERARACSSF0U05	1/2"	\$20.91
ERARACSSF0U07	3/4"	\$20.91
ERARACSSF0U10	1"	\$21.88
ERARACSSF0U12	1" 1/4	\$22.85
ERARACSSF0U15	1" 1/2	\$22.85



ERARACSSF0U05

## Forks (plastic)

Product No.	Dimensions	Price
ERARACPLFOU05	1/2"	\$2.95
ERARACPLFOU07	3/4"	\$4.60
ERARACPLFOU10	1"	\$4.60



ERARACPLFOU05

## Y (plastic)

Product No.	Dimensions	Price
ERARACPLY05	1/2"	\$2.90
ERARACPLY07	3/4"	\$4.50
ERARACPLY10	1"	\$4.60



ERARACPLY05

## Wire ties 18 ga.

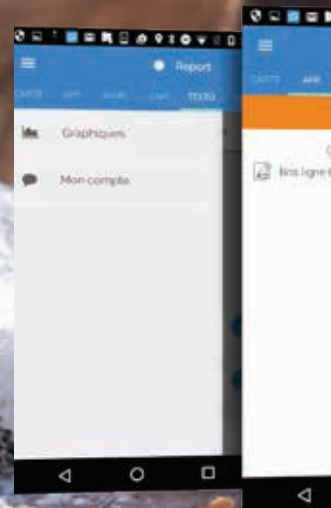
Product No.	Dimensions	Price
ERABRTWIS5	5 1/2" for tubing 3/4" - 2,500 pkg	\$30.00
ERABRTWIS6	6" for tubing 1" - 2,500 pkg	\$31.00
ERABRTWIS7	7" for tubing 1 1/4" - 2,500 pkg	\$32.00
ERABRTWIS8	8" for tubing 1 1/2" - 2,500 pkg	\$36.00
ERABRTWIS10	10" for tubing 2" - 2,500 pkg	\$40.00
ERABRTWIS12	12" - 2,500 pkg	\$43.00
ERABRTWIS14	14" - 2,500 pkg	\$46.00



ERABRTWIS6



**NORTH AMERICA  
BEST-SELLING  
AND MOST RELIABLE  
MONITORING SYSTEM.**

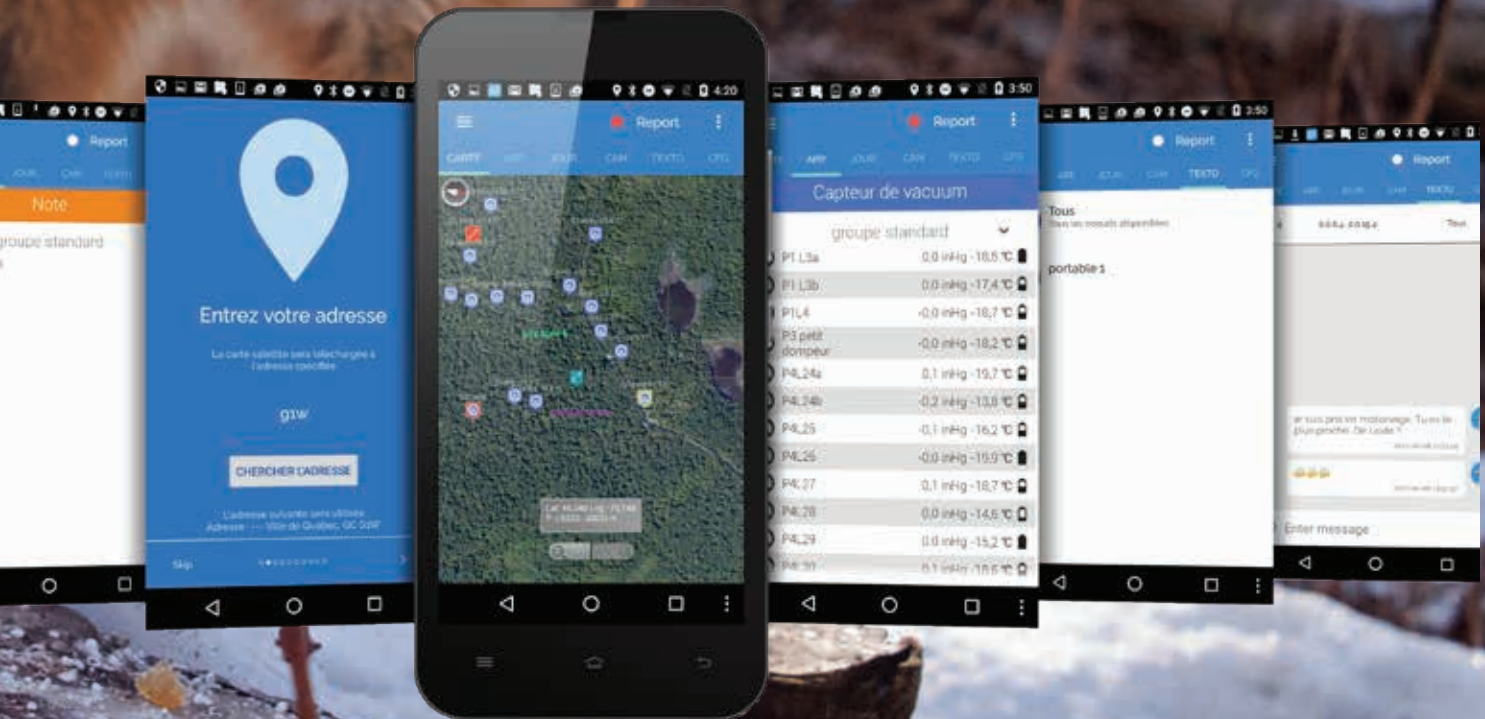


## H2O-Smartrek™ technology

The easy way to monitor your leaks

The H2O-Smartrek™ leak monitoring system is without a doubt the most efficient and advantageous one on the market. This reliable system is appreciated by the producers that have adopted it. The data collected by the sensors is transmitted via radio waves to an application that reads the information and sends you complete and easy-to-understand reports.

These reports, created in real-time, allow you to identify the location of your leaks and efficiently manage your employees assigned to that task. You can also visualize the performance of your equipment and production along with measuring your yield increase per tap. The number of sensors can be increased as your installation grows. Moreover, H2O Innovation offers you an exceptional technical assistance. But it's so easy to use, you won't need it.



# H2O-Smartrek™

## Starting kit

### ERAPRMAP-KIT

Starting kit - 8" tablet, long-range gateway, programmed

### ERAPRMAP-KIT2

Starting kit - 18" tablet, long-range gateway, programmed



### Characteristics

- The starting kit is the brain of the H2O-Smartrek™ system. It acts as a bridge between the tablet (Bluetooth option) and the radio network.  
ERAPRMAP-GAT and SAM550708



### ERAPRMAP-VAC-1

Vacuum sensor - single port (batteries included)

### Characteristics

- The vacuum sensor records the vacuum level and allows you to identify leaks. The sensor is highly precise at 0.10 inHg. If installed at the end of a main line, the sensor will also indicate the temperature.



### ERAPRMAP-VAC-2

Vacuum sensor - double port (batteries included)

### Characteristics

- The vacuum sensor – double port records the vacuum level and allows you to identify leaks. The sensor is highly precise at 0.10 inHg. When installed between 2 main lines, it will record 2 different vacuum measures. The sensor also records the temperature.



### ERAPRMAP-REL

Relay - remote control

### Characteristics

- The remote-control relay allows the control of two different electrical equipment, either manually or remotely, using a wireless network. The relay is compatible with all electrical installations (120 V, 240 V, 600 V, etc.).



### ERAPRMAP-LEV

Sensor - tank level 120 V

### ERAPRMAP-LVLB

Sensor - tank level (batteries included)

#### Characteristics

- The tank level sensor measures the sap level using ultrasounds. Since there is no direct contact with the sap, its use is hygienic.



### ERAPRMAP-HAN

Gateway for mobile

#### Characteristics

- The gateway for mobile connects to an Android mobile device. It gives you access to all data and information of your entire network, wherever you are, even while you are coping with the leaks.



### ERAPRMAP-GAT

Gateway - long range



### ERAPRMAP-REP

Repeater (batteries included)



**Timothy Perkins**  
Proctor Maple Research Center

“An adequate vacuum is crucial in achieving high sap production. We can’t monitor every part of the woods through the entire season – but H2O-Smartrek™ can. It has become a key part of our operation.”

- **Dr. Timothy Perkins**  
Director / Professor  
University of Vermont, VT

- Since the gateway for mobile uses radio waves, there is no need for a cellphone or an internet network. Thanks to this equipment the employees assigned to leak monitoring can communicate with each other using text messages.

#### Characteristics

- Communication within the system is orchestrated by a single equipment: the long-range gateway. All the information and measurements gathered by the different sensors on the network are sent to the gateway. It then prioritizes the speed and order in which to send the information on the wireless network.

#### Characteristics

- The repeater is used when the distance between two sensors is too big or when an elevation in the landscape may block the radio waves.

The repeater takes no measurements. It receives and transmits information to all the other sensors in range using radio waves.



## Flowmeters

Product No.	Model	Min. flow (GPM)	Max flow (GPM)	Nominal flow (GPM)
ERAPRMAP-EKM-075	3/4"	0.22	22	11
ERAPRMAP-EKM-100	1"	0.22	31	15
ERAPRMAP-EKM-150	1 1/2"	0.22	88	44
ERAPRMAP-EKM-200	2"	0.22	132	66



ERAPRMAP-EKM-075



ERAPRMAP-EKM-100



ERAPRMAP-EKM-150



ERAPRMAP-EKM-200

### Characteristics

- Smartrek flowmeters  
Reading on meter or in Sugarheld on the Smartrek tablet (with relay)  
Available in 4 sizes  
All stainless steel  
Precision rate up to 2%



ERAPRMAP-INDUSLS

Ultrasound industrial level

### Characteristics

- High power ultrasound industrial level with self-cleaning cycles for challenging environments  
Liquids, pellets and powder can be measured.



ERAPRMAP-PIEZ

Piezometer – Cable \$2.70/ft.

### Characteristics

- Water column monitoring, usually in wells. Three measurement modes: water column, drawdown, water depth. Barometric compensation. Battery service life: 3 1/2 years for the sensor probe / 7 years for the sensor head.

Available measuring ranges:  
10 m / 30 m / 60 m / 120 m





### ERAPRMAP-PRES

Vacuum monitoring in a liquid medium, NPT 1/4

#### Options

- -1 - 0 bar (the vacuum is often used in farming to monitor ground pressure, when combined with a strain gauge)
- -14 - 100 psi
- 0 - 300 psi
- 0 - 1,000 psi
- Any other range upon request



### ERAPRMAP-PADFLO

Rotary chopper wheel flowmeter

#### Characteristics

- Flow and volume monitoring for piping from 1" to 4" diameter with relay



### ERAPRMAP-ELECFLO

Electro-magnetic flowmeter - 3"

Electro-magnetic flowmeter - 4"



#### Characteristics

- Electro-magnetic flowmeter providing total and lot volume monitoring, reverse & forward running. Only the lot volume can be reset. Battery service life: 4 years.

Can be used with Seametrics IMAG4700 (version with battery) for a wireless optimal operation of the battery.

## Accessories



### ERAPRMAP-CAM-BASE

Base kit



#### Characteristics

- 1 x 8-channel recorder with 1 TB hard drive
- 1 x 1.5 m Ethernet cable
- 1 x power supply
- 1 x USB mouse
- 1 x 1.8 m HDMI cable
- 4 x 720P cameras
- 4 x screw pkg
- 2 x 25 m Ethernet cable
- 2 x 15 m Ethernet cable
- 1 x installation guide
- 1 x warning sticker
- 1 x CD



### ERAPRMAP-WIFI-EXT

Wi-Fi range extender

### ERAPRMAP-CAM

Surveillance system

#### Characteristics

- Monitor your maple farm at all times thanks to this new monitoring system using Foscam IP cameras. Choose high-quality picture and POE technology for a quick and easy installation of Foscam cameras.
- Thanks to its night vision function, the motion sensor will notify you day and night whenever it detects an intrusion.
- The advanced Foscam recording system allows easy playing of video replays.
- Connect a monitor to the management housing and enjoy live video.
- It is possible to make recordings using up to 8 cameras simultaneously.
- Record in HD over a period of more than 160 days with one camera only and the 4 TB hard drive (sold separately).
- Several options available to meet your needs.
- \*Requires a fast Internet connection for a remote use. Contact us for more information. Installation not included.

#### Characteristics

- Stay in control and keep an eye on your system in case of power outage.

Several options available to meet your needs.

**\*Requires a fast Internet connection for a remote use. Contact us for more information. Installation not included.**



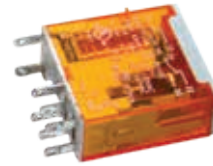
### ERAPRMAP-ROUTER

Router



ALL700HN122

Base for relay 24V



ALL700HK32Z24

24V relay for remote control



ERAPRMAP-C

Amperemeter 100 amp



ERAPRMAP-HUM

Moisture trap - Humidity sensor



ERAPRMAP-F

Float



ERAPRMAP-L

Switch

## Automated valves

Product No.	Description
ERAVALH20-VAL-020	Butterfly valve 2"
ERAVALH20-VAL-030	Butterfly valve 3"
ERAVALH20-VAL-107	Ball valve 3/4"
ERAVALH20-VAL-310	3-way ball valve 1"
ERAVALH20-VAL-405	Needle valve 1/2"
ERAPRMAP-CONT-VAL	Valve - Smartrek option

\*Thread NPT connection or insert not included.



## SMARTREK WEB APP 2.0

- Modern version
- Easy to connect
- More precise graphics
- Simultaneous access to many sites
- Sound alarms on any device



Category	Item	Value	Unit
Water	PS16	0.00	mmHg
	PS16	0.00	mmHg
	PS14	0.00	mmHg
	PS16 (average)	0.01	mmHg
	PS20	0.00	mmHg
	PS22	0.00	mmHg
	PS21	0.00	mmHg
	PS27	0.00	mmHg
	PS28	0.00	mmHg
	PS29	0.00	mmHg
Gateway	PS20 - PS42	0.00	mmHg
	PS19	0.00	mmHg
Reverse Osmosis	PS17	0.00	mmHg
	PS17	0.00	mmHg

## NEW FUNCTIONS OF THE PORTABLE GATEWAY

(without cell phone network or Wi-Fi)

- Employees localization in real-time on the map
- Replay functionality with timeline to analyze path
- Text communication by radio waves
- Work checkpoints on the map
- All pumps data and control while in the woods



# H2O-SMARTREK™, ENSURED PROFITABILITY

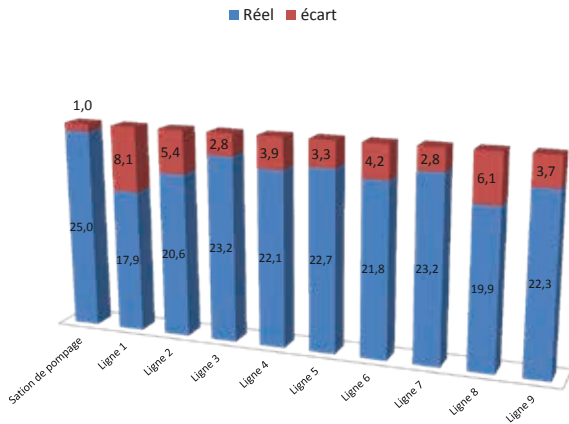
Ex: A producer has 9 main-lines linked to a pumping station. Graph #1 shows the annual average of the vacuum level of each of the main-lines (blue section) while comparing it to the vacuum level of the pumping station. The red section represents the difference between the target value of 26 inHg and the real average of each main-line. We can see that line #1 has an average of 17.9 inHg. This represents 8 inHg less than the target value of 26 inHg. The main-line diameter is undersized as shown on Graph #2 as there is a drop of vacuum at the moment of the day where the casting is at its best.

According to the performance in pounds per tap and the number of trees attached to this main-line, and considering that for each additional inHg the water supply is increased by 5% we can conclude that changing the main-line will provide an additional income of approximately \$4 000 for the year (Graph #3).

## Data analysis

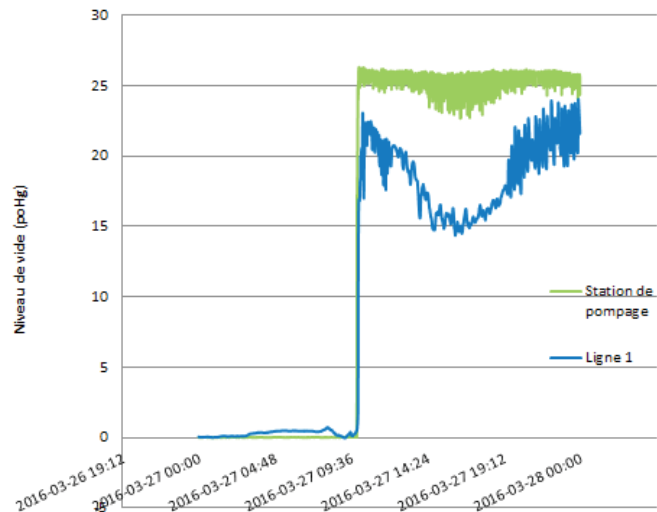
Graph1

Comparison of the average per main-line



Graph 2

Comparison between releaser and Line #1



Graph 3

Only by modifying line 1

Target value : 26

% augmentation rate by  
 inHg : 5%  
 Syrup price : \$2.70

# lines	Number of taps	Syrup quantity produced (lbs)	Additional syrup volume	Additional revenue
Line 1	843	3 709.2	1 499.1	\$4 047.49

# TOOLS



# LOAC : Hammers | Spout pullers | Hauban tensioner

All aluminium made



ERA412911

2 face hammer

\$5.50



ERA412912

Hammer with blade

\$32.75



ERA412913

Spout puller hammer

\$32.75



ERA412914

Axe hammer

\$36.75



ERA412941

Universal installation clamp plier 5/16"

\$315.00



ERA412939

Multifunctional reparation plier

\$217.50



ERA412932

Hauban tensioner 22,5"

\$88.50



ERA412922R

Rotative spout puller 20"

\$140.00



ERA412921

Mini spout puller 15"

\$30.50

ERA412933

Hauban tensioner 30"

\$93.00

ERA412923R

Rotative spout puller 30"

\$150.00

ERA412922

Standard spout puller 22.5"

\$34.50

ERA412924R

Rotative spout puller 40"

\$160.00

ERA412923

Long spout puller 30"

\$38.50

ERA412924

X-long spout puller 40"

\$43.00



New tools



ERA412942  
 Universal installation clamp plier 3/16"  
 \$310.00



ERA412950  
 Paint spout puller  
 \$129.00



ERA412943  
 Cut-flow plier  
 \$51.00



ERA412901  
 Foam handle  
 \$7.00



ERA412904  
 Food grade lubricant 120ml  
 \$13.00



ERA41271615  
 Aluminum horizontal reel 22"  
 \$114.88

ERA41271616  
 Aluminum horizontal reel 28"  
 \$126.69



## Accessories



FLOY63BTL-30

Manometer 0 to -30 Hg |  
Back connection

\$29.00



STL47998

Sight level

\$49.95



ERA412TAB6

6-pocket apron (orange)

\$185.00



ERA412PINGRIP

Gripper pliers

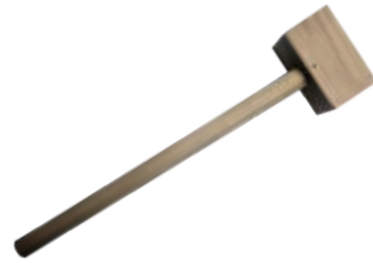
\$142.00



ERAMJM884

Vacuum gauge adapter

\$12.50



ERA412MARTEAUC

Wooden hammer

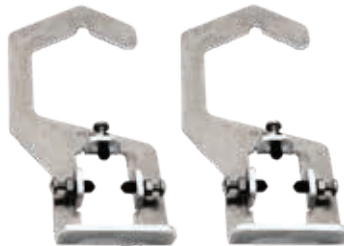
\$4.75



505ALB

Endura gloves with aluminized back

\$59.00



ERA41271902

Main-line support hooks

\$56.00



PFH425BOILET

Mailbox

\$199.00

SPH-425BOILETNOM

Mailbox with identification plate

\$249.00

Pliers



ERA41271050  
Compact insertion tool with knife  
\$114.83



ERA41271101  
Tubing installation tool auto-tension  
\$309.85



ERA41271108  
Light tubing plier with knife  
\$222.20



ERA41271109  
Light tubing installation tool  
\$174.68



ERA41271141  
Tubing installation tool with screw adjustment  
\$270.28



ERA41271210  
4-function tubing split cutter  
\$122.35



ERA41271401  
Repair tubing tool auto-tension  
\$135.79



ERA41271441  
Tubing repair tool screw adjustment  
\$107.37



ERA41271500  
Main line pliers 3/4" - 1"  
\$237.77

ERA41271510  
Main line pliers 1" - 1 1/4"  
\$237.77

Miscellaneous tools



ERA412169973  
Automatic wire twister  
\$41.95



ERA41271575  
Wire tension tool # 9 & 12  
\$74.18



ERA41271625  
Horizontal adjustable reel  
38" diameter  
\$181.17



ERA41271635  
Vertical reel  
\$137.48



ERA41271901  
Manual wire twister  
\$19.06



ERA41271904  
Hook approximation  
\$14.77



ERA412719991  
Rotating adaptor for drill 1/4"  
\$9.98



**NEW**  
ERACOUPETUBE  
Simple tubing plier 5/16"  
\$14.95



PFH-PIN-01-01A  
Drop plier  
\$299.00

LOC-PIN-01-01A  
Drop plier to rent  
\$25.00 / week

Spout pullers



ERA41271822  
7/16" spout puller 15"  
\$19.67



ERA41271854  
Pocket spout puller 8"  
\$14.99



ERA412718561  
Universal spout puller 15"  
\$19.67

## Punches



ERA41271300

Hole punch tool 31/64" red for 881

\$105.21



ERA41271301

Hole bit with handle 31/64" red

\$47.25



ERA41271302

Hole bit 31/64"

\$26.72



ERA41271310

Hole punch tool 15/32" green for 820

\$105.21



ERA41271311

Hole bit with handle 15/32" green

\$45.87



ERA41271331

Hole bit with handle 5/16" yellow

\$44.82

ERA41271312

Hole bit 15/32"

\$28.78

## 3/16" Tools



ERA412710501

Compact insertion pliers with knife 3/16"

\$114.83



ERA412710506

Compact insertion pliers 3/16"

\$83.32



ERA412710551

Compact insertion pliers 3/16"

\$127.12



ERA412710651

Compact insertion pliers 3/16"

\$118.05

## Tapping bits

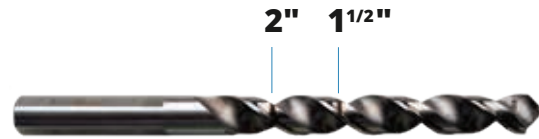


Check out many tutorials online on our channel!



### H2O Innovation tapping bits

H2O Innovation tapping bits are sold with a protective case. Sharpened with precision for a precise tap. 1 1/2" & 2" deep laser lines.



ERA412106H

H2O Innovation tapping bit 19/64"

\$17.95



ERA412105H

H2O Innovation tapping bit 5/16"

\$19.95



ERA412107H

H2O Innovation tapping bit 1/4"

\$19.95

### Bolduc tapping bits



ERA412103

Bolduc 7/16" tapping bit

\$32.95



ERA412105

Bolduc 5/16" tapping bit

\$25.95



ERA412106

Bolduc 19/64" tapping bit

\$25.95



ERA412107

Bolduc 1/4" tapping bit

\$25.95

# MAPLE SAP EXTRACTORS

H2O Innovation continuous vacuum extractors are the best option available on the market. When sap accumulates inside the extractor, the float activates the submersible pump. They offer many benefits:

- No moving back of the sap in the main-line
- No ambient air introduced into the system (vs. mechanical releaser)
- Mechanical float: simple & efficient
- Easy maintenance
- Pump ½ HP with low consumption
- Can be used up to 29.5 inHg
- Manometer included
- Automatic wash systems available

## Vertical extractor 1236

Product No.	Description	Dimensions	Tap capacity	Elevation	Height	Input
ERARELH201236HVC	1-pump vertical extractor 30 gpm	12" x 36"	15 GPM @ 28 inHg	10 feet	21"	2 x 2"
ERARELH201236HVC-M	1-pump vertical extractor 30 gpm with pre-punched 6" x 27" manifold	12" x 36"	15 GPM @ 28 inHg	10 feet	27.5"	5 x 1" <sup>1/4</sup>

Known as the small one, this extractor has been designed for high vacuum levels. The integrated 30 gpm pump will feed most of the 5,000-tap facilities. The top lid offers an easy access to the internal components, allowing a quick and efficient cleaning. Moreover, it drains really fast through the bottom valve. Thanks to its optional input collector 6" x 27" this model is economical and flexible.

## Horizontal extractor 1230

Product No.	Description	Dimensions	Tap capacity	Elevation	Height	Input
ERARELH201230HVC-H	1-pump horizontal extractor 30 gpm	12" x 30"	15 GPM @ 28 inHg	10 feet	21"	5 x 1" <sup>1/4</sup>

Similar to the 1230HVC model, this brand-new product meets many of our clients' requirements. Horizontally designed, it easily fits on a basin for a temporary use in case of power failure. It also has the advantage of offering a very low sap input height when installed on the ground. Thanks to its easy access it can quickly be cleaned. The standard version is designed to feed a 5,000-tap maple farm



ERARELH201236HVC



ERARELH201236HVC-M



ERARELH201230HVC-H

## Extractor 1836

Product No.	Description	Dimensions	Tap capacity	Elevation	Height	Input
ERARELH201836HVC	1-pump vertical extractor 30 gpm	18" x 36"	15 GPM @ 28 inHg	10 feet	25 1/2"	2 x 3"
ERARELH201836HVC-M	1-pump vertical extractor 30 gpm with pre-punched 8" x 36" manifold	18" x 36"	15 GPM @ 28 inHg	10 feet	34"	6 x 1 1/4"
ERARELH201836HVC-2	2-pump vertical extractor 30 gpm	18" x 36"	30 GPM @ 28 inHg	10 feet	25 1/2"	2 x 3"
ERARELH201836HVC-2M	2-pump vertical extractor 30 gpm with pre-punched 8" x 36" manifold	18" x 36"	30 GPM @ 28 inHg	10 feet	34"	6 x 1 1/4"
ERARELH201836HVC-3	3-pump vertical extractor 30 gpm	18" x 36"	45 GPM @ 28 inHg	10 feet	25 1/2"	2 x 3"
ERARELH201836HVC-3M	3-pump vertical extractor 30 gpm with pre-punched 8" x 36" manifold	18" x 36"	45 GPM @ 28 inHg	10 feet	34"	6 x 1 1/4"
ERARELH201836HVC-H	1-pump horizontal extractor 30 gpm	18" x 36"	15 GPM @ 28 inHg	10 feet	23 1/2"	6 x 1 1/4"
ERARELH201836HVC-HM	1-pump hor. extractor 30 gpm with pre-punched 8" x 36" manifold	18" x 36"	15 GPM @ 28 inHg	10 feet	31 1/2"	6 x 1 1/4"
ERARELH201836HVC-H2	2-pump horizontal extractor 30 gpm	18" x 36"	30 GPM @ 28 inHg	10 feet	23 1/2"	6 x 1 1/4"
ERARELH201836HVC-H2M	2-pump hor. extractor 30 gpm with pre-punched 8" x 36" manifold	18" x 36"	30 GPM @ 28 inHg	10 feet	31 1/2"	6 x 1 1/4"
ERARELH201836HVC-H3	3-pump horizontal extractor 30 gpm	18" x 36"	45 GPM @ 28 inHg	10 feet	23 1/2"	6 x 1 1/4"
ERARELH201836HVC-H3M	3-pump hor. extractor 30 gpm with pre-punched 8" x 36" manifold	18" x 36"	45 GPM @ 28 inHg	10 feet	31 1/2"	6 x 1 1/4"
ERARELH20HY1824HVC	Hybrid 1-pump extractor 30 gpm (electrical with mechanical option)	18" x 24"	17 GPM @ 28 inHg	Tank	Tank	8 x 1 1/4"

### 1836HVC and 1836HVC-H

With the same advantages as smaller models, the 1836HVC is available in several versions. Depending on the number of taps of the producer, up to 3 pumps can be included. The 3-pump model is designed for 15,000-tap maple farms.

Alike the 1836HVC, this horizontal extractor can be installed on a basin in case of power failure.

### HY1824HVC

This extractor has all the advantages of electrical extractors and guarantees its owner an unmatched peace of mind. Installed on a basin, the integrated pump will do all the work. However, in case of an excessive run or unexpected breakage, the mechanical option will come in, thus allowing an increased operation safety.



ERARELH201836HVC-H3M

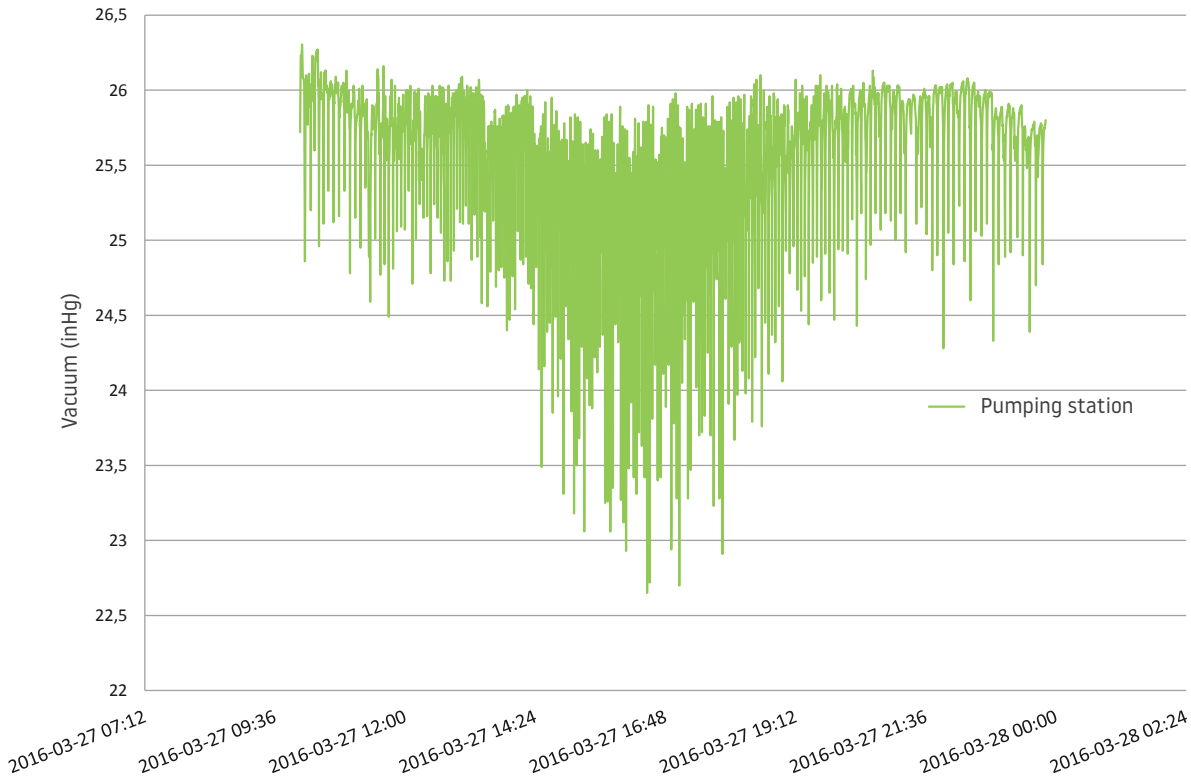


ERARELH20HYB1824HVC





### Variation of the vacuum level of a mechanical extractor



Makes it possible to obtain a level of continuous vacuum preventing a drop each time the extractor releases.



ERARELH2O1836HVC-2

### Extractors options

Product No.	Description
ERARELIN	Customized manifold piercing: extractor price with manifold
ERARELIN	Extra piercing on releaser: extractor price without manifold
PEN-30DOM5221	Extractor pump 30 gpm
PEN-10DOM5221	Extractor pump 10 gpm
ERABER350-13	Extractor lid 12" x 30"
ERABER350-19	Extractor lid 18" x 36"

## Transfer tanks

Product No.	Dimensions
ERABER246	6" x 12" - air input 1 1/2", sap output 1 1/4", sap input 4 x 1"
ERABER247	6" x 18" - air input 1 1/2", sap output 1 1/4", sap input 6 x 1"
ERABER247-1	6" x 24" - air input 1 1/2", sap output 1 1/4", sap input 8 x 1"
ERABER248	12" x 18" - air input 1 1/2", sap output 1 1/4", sap input 5 x 1"
ERABER250	12" x 24" - air input 1 1/2", sap output 1 1/4", sap input 2 x 3"
ERABER252	12" x 36" - air input 1 1/2", sap output 1 1/4", sap input 2 x 3"
ERABER253-3	18" x 36" - horizontal with legs
ERABER253-3V	18" x 36" - vertical

## Extractor accessories

Product No.	Description	Dimensions
ERABER110	Automatic start and stop	
ERABER110-A	Cylinder 8" x 16"	
ERABER110-C	Lid 8"	
ERABER110-D	Elbow 5/16"	
ERABER110-E	Plug	
ERABER110B	Electrical box	
ERABER255-1	Lid	
ERABER255-2	Casing bottom 8"	
ERABER255-3	Retractable handle	
ERABER255-4	Lid handle	
ERABER312	Pressure regulator	
ERABER312-C	Bucket	
ERABER312-S	Support	
ERABER312-V	Valve	
ERABER432	Float for tank	
ERABER432-R	Stainless steel rod	
ERABER433	Float for tank, vacuum control	
ERARELTR827	Moisture trap - single	8" x 26" output 2"
ERARELTR1227	Deluxe electrical moisture trap	3" with foam
PFHSUPREL	Stainless steel frame for releaser on tank	
PLA3041/216GA4896A	Stainless steel lattice	Ex.: plate 6" x 9" = \$8.90



ERARELTR1227



PFHSUPREL



ERABER253-3



ERABER211



ERABER218

## Mechanical sap extractor

Product No.	Dimensions	Tap capacity	Manifold	Sap output height	Pump outlet
ERABER216	Vertical simple 12" x 18"	1 000	6" x 12" 4 x 1"	2" 20" high	1 1/2"
ERABER211	Vertical double 8" x 16"	1 000	6" x 18" 4 x 1"	2 x 2" 18" high	1 1/2"
ERABER212	8" x 16" (sap lift with drain valve)	1 000	6" x 18" 4 x 1"	1 1/4" 29" high	
ERABER213	Vertical double 12" x 18"	3 000	6" x 27" 6 x 1"	2 x 2" ± 20" high	1" 1/2
ERABER215	Horizontal simple 18" x 24"	6 000	8" x 27" 8 x 1" 1/4	2 x 3" ± 27" high	2"
ERABER217	Horizontal double 12" x 18"	5 000	6" x 30" 8 x 1" 1/4	2 x 3" ± 18" high	2"
ERABER218	Horizontal double 12" x 18"	5 000	6" x 36" 8 x 1" 1/4	2 x 3" ± 18" high	2"
ERABER219	Horizontal double 18" x 18"	12 000	6" x 42" 12 x 1" 1/4	4 x 3" ± 24" Haut	2"
ERABER220	Horizontal double 18" x 18"	12 000	6" x 42" 12 x 1" 1/4	4 x 3" ± 24" high	2"
ERABER222	Horizontal double 18" x 24"	25 000	8" x 52" 15 x 1" 1/4	8 x 3" ± 27" high	3"
ERAREL30-6X27	Modification kit for mechanical releaser	-	-	-	-

### Characteristics

- For maple farms operating 500 to 25 000 taps  
Efficient, reliable and not affected by frost  
Submersible pump included, the vacuum is never interrupted during a cycle.  
N.B. Additional fees apply for any modifications or options

It is possible to transform your mechanic extractor into an electrical one.  
It's also possible to add a pump to a mechanical releaser to transform it into a continuous vacuum extractor.  
Contact your H2O Innovation representative for more information.



## Container & pumping station

Container new or used

Available in 20' or 40' length

2" insulation plywood or white plastic finition

36" industrial door on the side in option

Skis in option

Exterior holes for aeration in option

Electricity input, electric plug, light, 240V heating

Plumbing & connection, tank, drain, pump, vacuum pump, etc.



## Characteristics

- Containerized pumping station. Can include skis to transport on site, vacuum pump, releaser, moisture trap, tank, transfer pump, electrical pannel, Smartrek, lighting. All of these in a new or used container.

# CUSTOM PROJECTS TURNKEY

## Contact

H2O Innovation Maple  
and start your project now!

H2O Innovation Maple is backed by a multidisciplinary engineering team experienced in membrane filtration and custom projects.

With this solid team, H2O Innovation Maple can help you accomplish that slightly crazy project you have in mind.

Our team can help you with :

- Mechanical engineering
- Architecture
- Sugarhouse layout
- Tubing set up

---

**FINANCING  
OFFERED**



Farm Credit Canada

# CASE STUDY

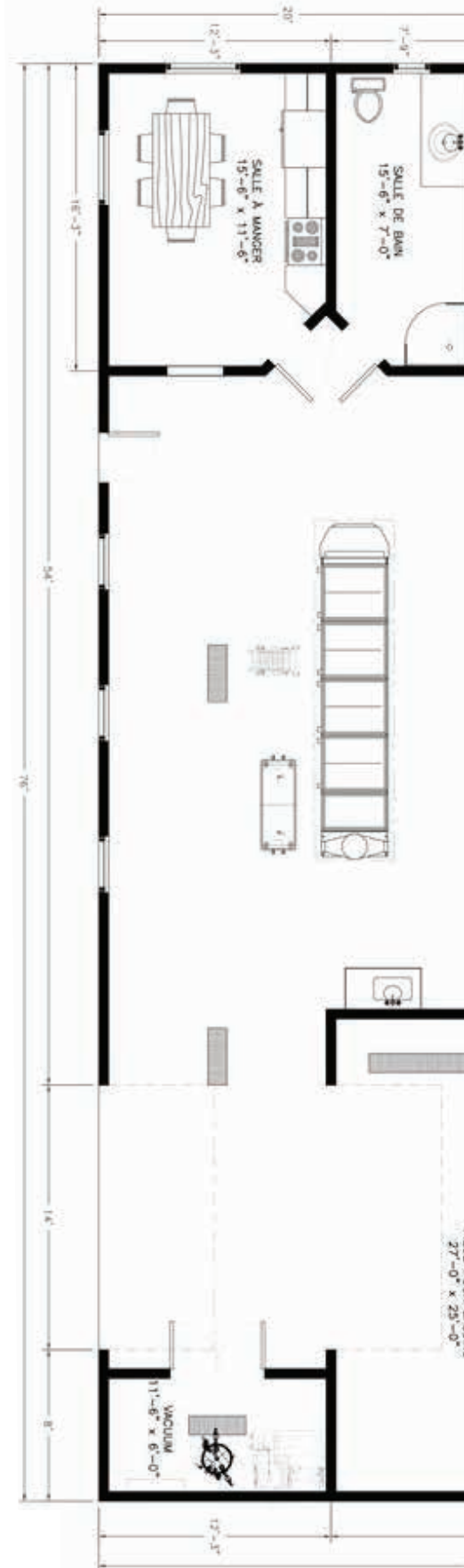
## ÉRABLIÈRE DU NORD

The Erablière du Nord maple farm is located in Trois-Rives in the Haute-Mauricie region and is owned by Mathieu Toupin, his wife Andréanne Guilbert and their associate Benoit Gingras.

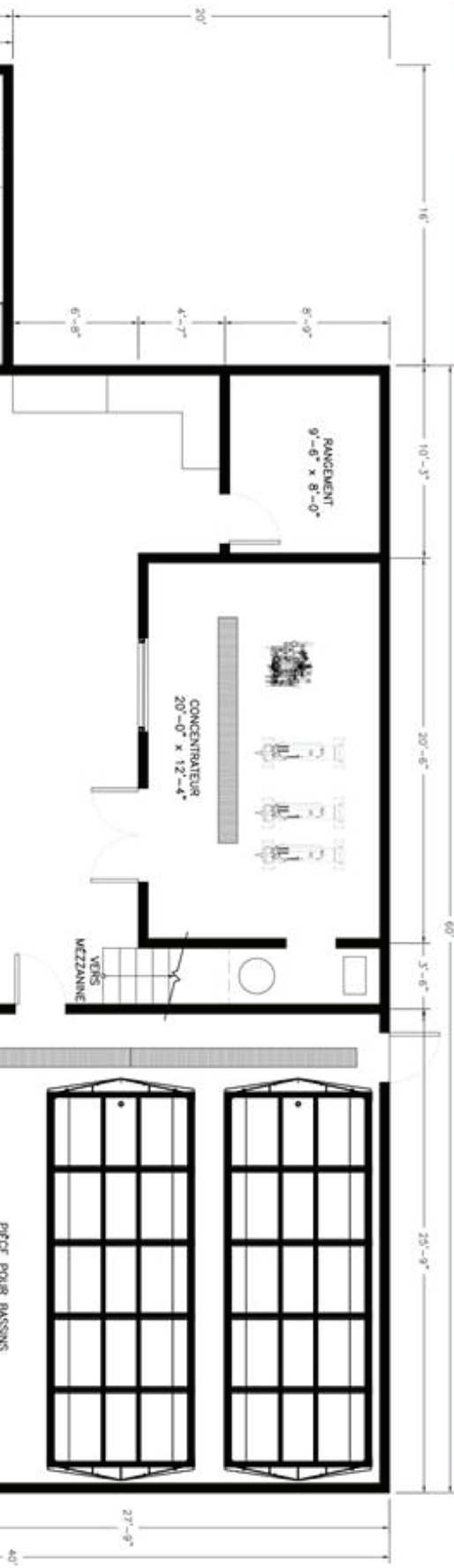
The H2O team, together with the Érablière Rémi Bolduc jointly designed this new 15 000 tap project as part of the awarding of new quotas on public lands. They will also deal with organic pre-certification.

This project is characterized by many specific challenges due to a rough & steep undulating terrain (many rifts & runs), which required more main-line and time than a “regular” facility. They ended up with nearly 3 500 working hours, including family and friends’ assistance.

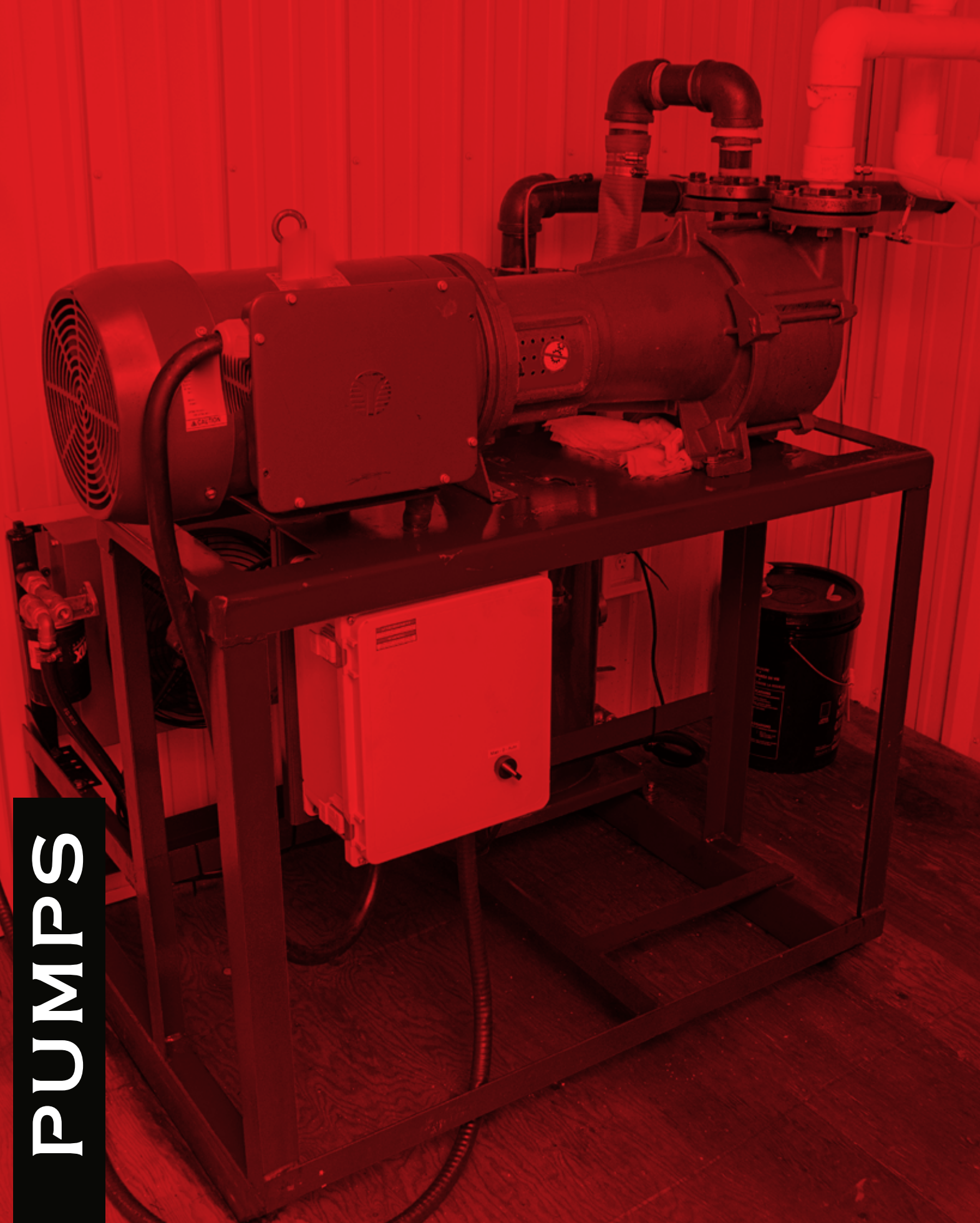
The facility will be equipped with High Brix equipment and ultimately with the H2O-Smartrek radio frequency monitoring system. The evaporator is a 3 ½’ x 16’ finishing rig. The osmosis is a 5-vessel Econox with 2 High Brix vessels. The pumping system relies on 2 Travaini 10 HP vacuum pumps with 2 electrical releasers.



CALL US : (819) 344-2288



# PUMPS







Oil-lubricated, these high-performance pumps can reach an incredible vacuum level close to the absolute vacuum (up to 29.9 inHg). They are silent, reliable and compact. For a leakproof gathering system, this pump is the No. 1 choice.

### KWIK Lubricated Rotary Vane Vacuum Pumps - EM

Product No.	Description
ERAEM28B	H <sub>2</sub> O Innovation lubricated rotary vane vacuum pump with electrical engine 1.5 HP, 220/1/60
ERAEM63B	H <sub>2</sub> O Innovation lubricated rotary vane vacuum pump with electrical engine 3 HP, 220/1/60
ERAEM100B	H <sub>2</sub> O Innovation lubricated rotary vane vacuum pump with electrical engine 5 HP, 220/1/60
ERAEM140B	H <sub>2</sub> O Innovation lubricated rotary vane vacuum pump with electrical engine 7.5 HP, 220/1/60
ERAEM202B	H <sub>2</sub> O Innovation lubricated rotary vane vacuum pump with electrical engine 10 HP, 220/1/60
ERAEM202B-KIT	H <sub>2</sub> O Innovation lubricated rotary vane vacuum pump with electrical engine 10 HP, 220/1/60, skid-mounted with moisture trap and variable speed drive



ERAEM28B

ERAEM63B



ERAEM140B

ERAEM100B

#### Characteristics

- Equipped with lubricated rotary vanes, this compact pump is amongst the most reliable and profitable. The pump can reach 29 inHg.

### KWIK Dry Rotary Vane Vacuum Pumps - DVV

Product No.	Description
ERADV25	H <sub>2</sub> O Innovation dry rotary vane vacuum pump with electrical engine 1.5 HP, 220/1/60
ERADV40	H <sub>2</sub> O Innovation dry rotary vane vacuum pump with electrical engine 2 HP, 220/1/60
ERADV60	H <sub>2</sub> O Innovation dry rotary vane vacuum pump with electrical engine 3 HP, 220/1/60
ERADV80	H <sub>2</sub> O Innovation dry rotary vane vacuum pump with electrical engine 5 HP, 220/1/60
ERADV100	H <sub>2</sub> O Innovation dry rotary vane vacuum pump with electrical engine 5 HP, 220/1/60
ERADV140	H <sub>2</sub> O Innovation dry rotary vane vacuum pump with electrical engine 7.5 HP, 220/1/60
ERADV140/3	H <sub>2</sub> O Innovation dry rotary vane vacuum pump with electrical engine 7.5 HP, 220/3/60
ERADV200	H <sub>2</sub> O Innovation dry rotary vane vacuum pump with electrical engine 7.5 HP, 220/1/60
ERADV250	H <sub>2</sub> O Innovation dry rotary vane vacuum pump with electrical engine 10 HP, 220/1/60



ERADV25



ERADV40



ERADV60

#### Characteristics

- These vacuum pumps are built simply, which gives them sturdiness and durability. They generate low user and maintenance fees. Coupled with an oil-free operation, the different chambers are separated by rotary vanes with high longevity. These pumps can reach 25 inHg.

## Mini Vacuum 120V 1.5 AMP

Product No.	Description
ERAMINIVAC-100E	400 taps - Ronvic filter included (ERARONPREF)
ERAMINIVAC-200E	800 taps - Ronvic filter included (ERARONPREF)
ERARONPREF	Ronvic prefilter 1 1/2"
ERAP07090-02	Diaphragm replacement kit



ERARONPREF



ERAMINIVAC-100E

## Starter for electric engines

Product No.	Description
Z01150274	Engine starter 2HP
Z01150275	Engine starter 3HP
Z01150276	Engine starter 5HP
Z01150277	Engine starter 7.5HP
Z01150278	Engine starter 10HP



## Optional accessories

Product No.	Description
AIR01152443	Thermostat with start depending on weather
SCHXMLPM00RD23F	Pressure transmitter (4-20MA) -30inHg - 30 psi
ERABER1520-C	Clear check valve 2"
ERABER312	Vacuum control with counter weight
DFM220360.2X	Coalescent filter for H2O flood
VFDKIT-2HP	Variable frequency drive for pump 2 HP
VFDKIT-3HP	Variable frequency drive for pump 3 HP
VFDKIT-5HP	Variable frequency drive for pump 5 HP
VFDKIT-7.5HP	Variable frequency drive for pump 7.5 HP
VFDKIT-10HP	Variable frequency drive for pump 10 HP



VFDKIT



DFM220360.2X

## Vacuum pumps



### Travaini pumps 3, 5, 7.5 & 10 HP

Excellent performance at high vacuum  
Variable speeds, silent engine, fully skid-mounted  
HAS A GREAT LIFE SPAN.

Product No.	Description
ERAVX-257	Complete pump with 3 HP engine - high vacuum (Max. vacuum of 28.5 Hg)
ERAVX257-KIT	Complete kit - Pump 3 HP - high vacuum and oil cooler
ERAVB40-110	Complete pump with 5 HP engine - high vacuum (Max. vacuum of 28.5 Hg)
ERAVB40-110-KIT	Complete kit - Pump 5 HP - high vacuum and oil cooler
ERASE40-100	Complete pump with 5 HP engine - medium vacuum (Max. vacuum of 26 Hg)
ERASE40-100-KIT	Complete kit - Pump 5 HP - medium vacuum and oil cooler
ERAVB40-150	Complete pump with 7.5 HP engine - high vacuum (Max. vacuum of 28.5 Hg)
ERAVB40-150-KIT	Complete kit - Pump 7.5 HP - high vacuum and oil cooler
ERASE40-150	Complete pump with 7.5 HP engine - medium vacuum (Max. vacuum of 26 Hg)
ERASE40-150-KIT	Complete kit - Pump 7.5 HP - medium vacuum and oil cooler
ERAVB40-200	Complete pump with 10 HP engine - high vacuum (Max. vacuum of 28.5 Hg)
ERAVB40-200-KIT	Complete kit - Pump 10 HP - high vacuum and oil cooler
ERASE50-220	Complete pump with 10 HP engine - medium vacuum (Max. vacuum of 26 Hg)
ERASE50-220-KIT	Complete kit - Pump 10 HP - medium vacuum and oil cooler



MEDIUM VACUUM  
SE series



HIGH VACUUM  
VB & VX series



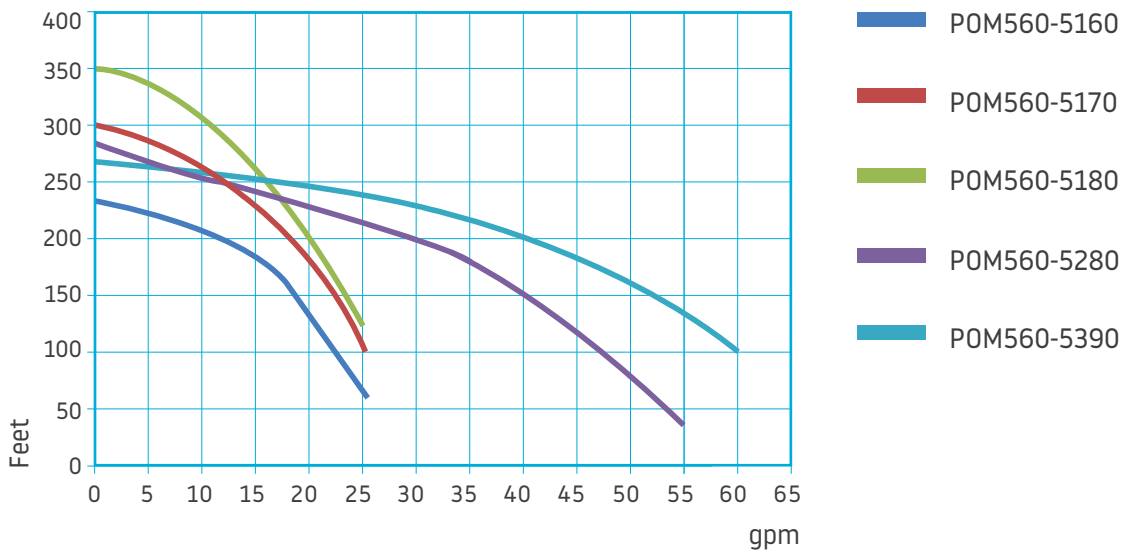
**Characteristics**

- Stainless steel head, frame and base
- 120 V, 240 V and 575 V 3 phase available
- Inlet and outlet 1 1/4"
- Maximum pressure of 320 psi
- No draw-in capacity
- From 300 to 4,800 gal./h
- Often used to carry water
- No flow on long distances
- ODP engine included
- TEFC engine optional

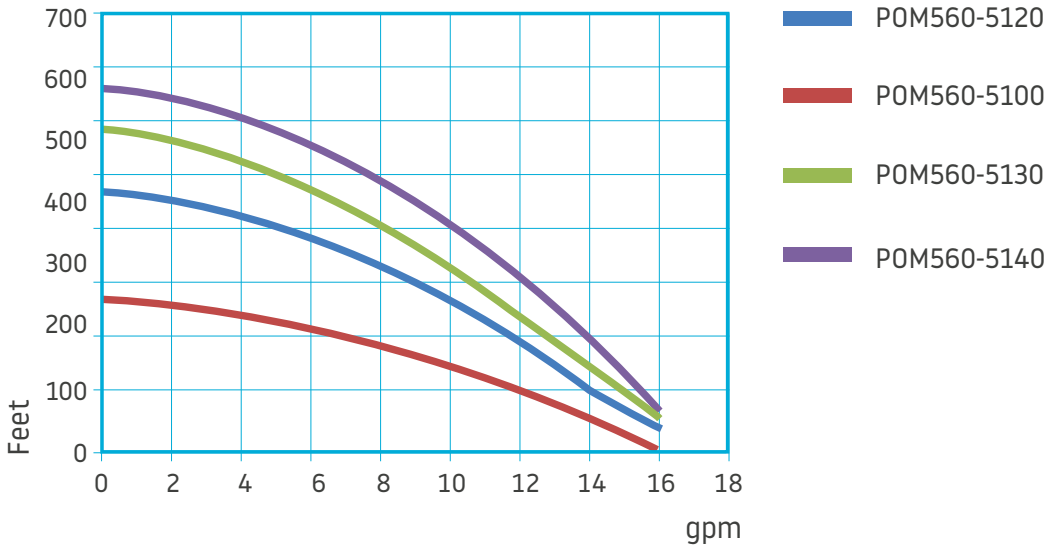
**Overpressure pump**

Product No.	Engine	Average flow	Max pressure
POM560-5010	0.5 HP	300 gal./h @ 100 psi	140 psi
POM560-5020	0.75 HP	300 gal./h @ 140 psi	180 psi
POM560-5100	0.5 HP	720 gal./h @ 40 psi	100 psi
POM560-5120	1 HP	720 gal./h @ 80 psi	160 psi
POM560-5130	1.5 HP	720 gal./h @ 100 psi	230 psi
POM560-5140	2 HP	720 gal./h @ 120 psi	250 psi
POM560-5160	1 HP	1 200 gal./h @ 50 psi	90 psi
POM560-5170	1.5 HP	1 200 gal./h @ 70 psi	120 psi
POM560-5180	2 HP	1 200 gal./h @ 85 psi	150 psi
POM560-5280	3 HP	2 100 gal./h @ 80 psi	120 psi
POM560-5390	5 HP	3 000 gal./h @ 70 psi	150 psi

**Pumps Performance Curve**



## Pumps Performance Curve



## Centrifugal pump

Product No.	Engine	Average flow	Input	Output
GOULB1012	1 HP	800 gal./h @ 55 psi	1" 1/4	1"
GOU1ST1E1C4	1 HP	2 400 gal./h @ 25 psi	1" 1/4	1"
GOU1ST1F1B4	1.5 HP	2 400 gal./h @ 35 psi	1" 1/4	1"
GOU1ST1G1A4	2 HP	2 400 gal./h @ 40 psi	1" 1/4	1"
GOU2ST1F1E4	1.5 HP	5 000 gal./h @ 20 psi	1" 1/2	1" 1/4
GOU2ST1G1D4	2 HP	5 400 gal./h @ 25 psi	1" 1/2	1" 1/4
POM319-0050	0.5 HP	240 gal./h @ 40 psi	1"	1"
EBA-A3U-32-160B50D1C	5 HP	6 000 gal./h @ 60 psi	2"	1" 1/4
GOU2ST1J1G4	5 HP	7 500 gal./h @ X psi	1" 1/4	1" 1/2

### Characteristics

- Stainless steel frame
- 120 V, 240 V
- 0.5 HP to 5 HP



GOULB1012



POM319-0050



GOU1ST1G1A4



## GVS Series

The GVS 20-300 series works according to the proven principle lubricated rotary vane pumps that have a proven track record in all vacuum applications in the industry. Robust and renowned the GVS 20-300 series has an innovative design and technologically advanced.

Atlas Copco has equipped the GVS 20-300 range of innovative features that guarantee higher performance at lower operating costs. The ballast is integrated in series to avoid condensation. Other features, such as air-oil separation and anti-return mechanism are integrated, allowing continuous operation between 400 mbar (a) and their optimal pressure. Clean and efficient, the GVS 20-300 series oil separation system has been optimized to reduce oil vapors in the exhaust. The flapper inlet check prevents the vacuum pump from rotating in the opposite direction, in case of shutdown without ventilation. This device also protects the point of use against oil re-aspiration.

## GHS Series

The GHS VSD+ Series is a range of new-generation, intelligent, oil-sealed rotary screw vacuum pumps with Variable Speed Drive (VSD) technology from Atlas Copco. Based on the well-known and durable plug-and-play design principles of Atlas Copco compressors, these vacuum pumps have been designed by vacuum engineers to deliver peak performance at your operating pressure.

These unique products offer:

- Superior performance against benchmarked oil-sealed and dry vane vacuum pump technologies
- Increased efficiency – State-of-the-art screw technology, Variable Speed Drive (VSD) and innovative motor design combine to produce a leap forward in efficiency
- Quiet operation – Operating noise is less disruptive than comparable technologies
- Sustainable productivity thanks to built-in efficiency
- Reduced environmental impact due to ultra-high oil retention at all operating pressures.



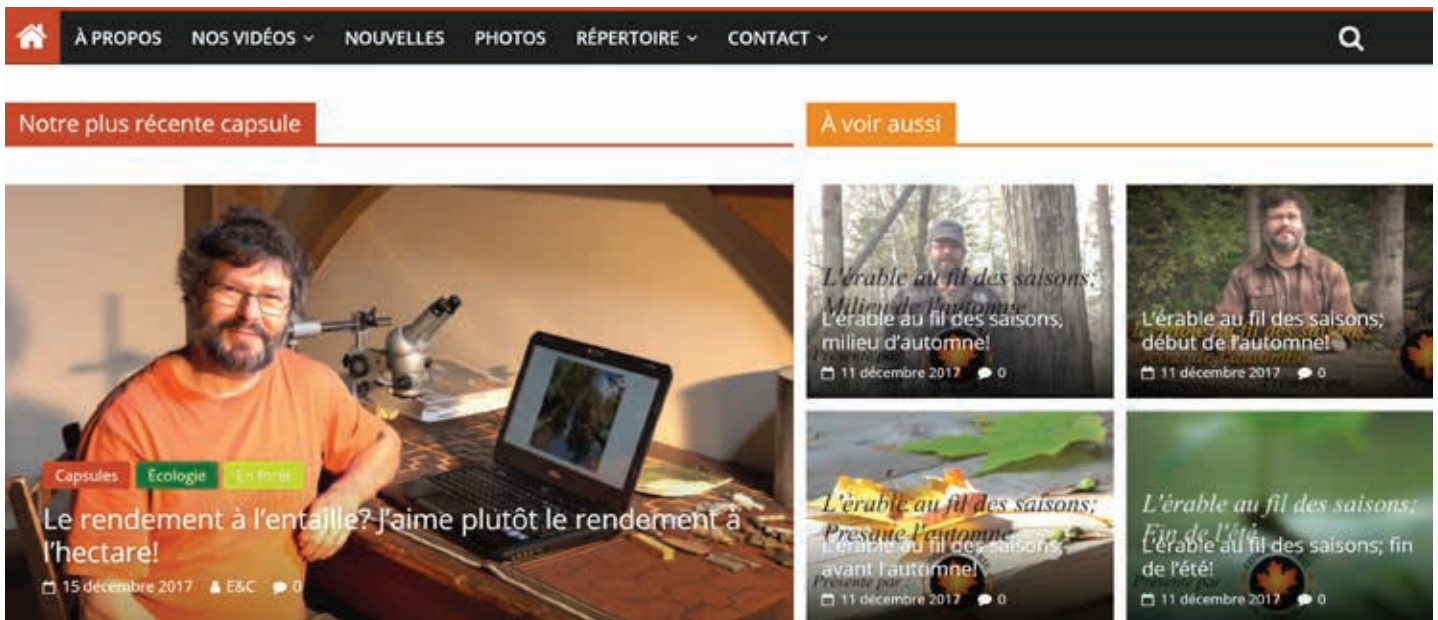



# Érable & Chalumeaux



"The whole team at **Érable & Chalumeaux** is proud to have **H2O Innovation Maple** as sponsor. Since our beginning, they encouraged us so that our website would materialize and become a reality. They allowed us to continue our vlogs on maple farming of Stéphane Guay Biologist. Thank you!"

- Stéphane Guay



The team would like to express gratitude to 



[www.erable-chalumeaux.ca](http://www.erable-chalumeaux.ca)

Sap tanks manufactured by H2O Innovation are made of extremely robust stainless steel grade 304 (20 ga.). Available in many sizes and capacities, our tanks offer guaranteed durability and solidity!

# TANKS





## RESEARCH & DEVELOPMENT : A SOLUTION TO THE VR5 SYRUP

In partnership with a maple farm, our research & development department has come up with an efficient treatment to the VR5 syrup. It consists in recirculating the sap in the tanks so that the raw product brews. Even though sap is filtered, the air injection was an important and risky factor and less tolerated in the community.

By using nozzles designed for this instance, the action of recirculating under pressure integrated to a 5-micron filtration system serves also as a tank washing system. The 2017 season's results were very convincing, resulting in no VR5 or VR4 syrup on a production of more than 6 lbs / tap. Therefore, even if exploiting the season to a maximum the quality remains.



## Rounded bottom tanks

### 48" width

Product No.	Width Int. / Ext.	Length Int. / Ext.	Height Int. / Ext.	Capacity gal. US
PFH216375L	48" / 48"	44" / 48"	44" / 48"	375
PFH216745L	48" / 48"	92"/96"	44" / 48"	750
PFH2161125L	48" / 48"	140"/144"	44" / 48"	1 125
PFH216250	44" / 48"	44" / 48"	32" / 36"	233
PFH216250H	44" / 48"	44" / 48"	32" / 39"	233
PFH216350	32" / 36"	92" / 96"	29" / 33"	435
PFH216350H	32" / 36"	92" / 96"	29" / 36"	435
PFH216375	44" / 48"	44" / 48"	44" / 48"	334
PFH216500	44" / 48"	92" / 96"	32" / 36"	488
PFH216500H	44" / 48"	92" / 96"	32" / 39"	488
PFH216745	44" / 48"	92" / 96"	44" / 48"	700
PFH216745H	44" / 48"	92" / 96"	44" / 51"	700
PFH216750	44" / 48"	140" / 144"	32" / 36"	743
PFH216750H	44" / 48"	140" / 144"	32" / 39"	743
PFH2161125	44" / 48"	140" / 144"	44" / 48"	1 066
PFH2161125H	44" / 48"	140" / 144"	44" / 51"	1 066
PFH2161000	44" / 48"	188" / 192"	32" / 36"	999
PFH2161000H	44" / 48"	188" / 192"	32" / 39"	999
PFH2161150	44" / 48"	188" / 192"	36" / 40"	1 143
PFH2161150H	44" / 48"	188" / 192"	36" / 43"	1 143
PFH2161500	44" / 48"	188" / 192"	44" / 48"	1 433
PFH2161500H	44" / 48"	188" / 192"	44" / 51"	1 433

#### Characteristics

- Highly robust stainless steel structure
- Drain output
- High-quality finishing
- Overlapped joints for increased solidity
- TIG welding to facilitate cleaning
- The codes ending with an H indicate that the frame is 6" higher for the drain output

#### Optional

- PFH216-TP : Overflow 1 1/2" or 2"
- PFH216-ECH : Interior or exterior ladder for tank
- Cover in option



PFH216375L



PFH216745H

## Rounded bottom tanks

### 62" width

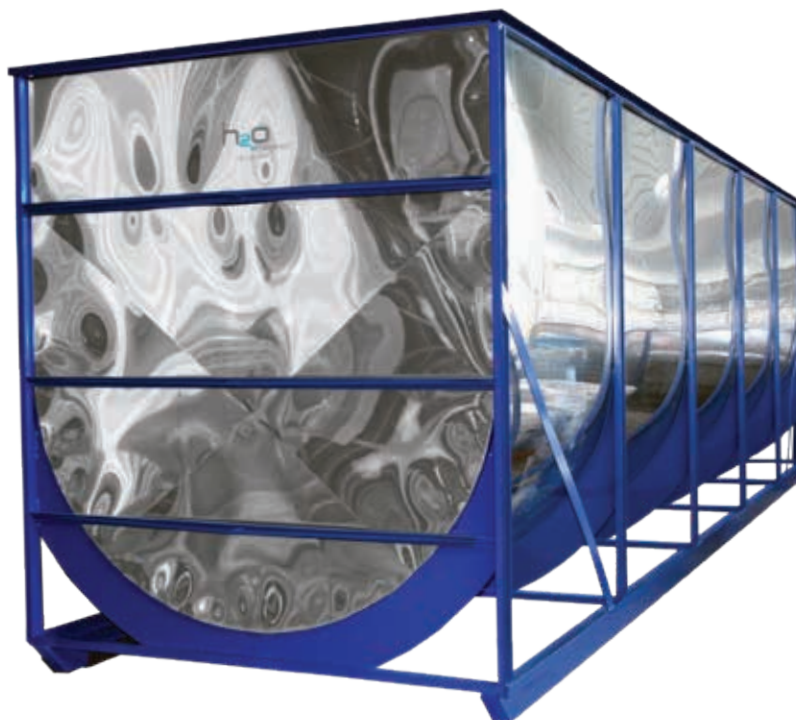
Product No.	Width Int. / Ext.	Length Int. / Ext.	Height Int. / Ext.	Capacity gal. US
PFH216824	58" / 62"	92.5" / 96"	40.5" / 44.5"	804
PFH216824S	58" / 62"	92.5" / 96"	40.5" / 48.5"	804
PFH2161398	58" / 62"	92.5" / 96"	65" / 68.5"	1 366
PFH2161398S	58" / 62"	92.5" / 96"	65" / 72.5"	1 366
PFH2161237	58" / 62"	140" / 143"	40.5" / 44.5"	1 213
PFH2161237S	58" / 62"	140" / 143"	40.5" / 48.5"	1 213
PFH2162098	58" / 62"	140" / 143"	65" / 68.5"	2 060
PFH2162098S	58" / 62"	140" / 143"	65" / 72.5"	2 060
PFH2161649	58" / 62"	187.5" / 191"	40.5" / 44.5"	1 630
PFH2161649S	58" / 62"	187.5" / 191"	40.5" / 48.5"	1 630
PFH2162797	58" / 62"	187.5" / 191"	65" / 68.5"	2 769
PFH2162797S	58" / 62"	187.5" / 191"	65" / 72.5"	2 769
PFH2162061	58" / 62"	235" / 239"	40.5" / 44.5"	2 047
PFH2162061S	58" / 62"	235" / 239"	40.5" / 48.5"	2 047
PFH2163496	58" / 62"	235" / 239"	65" / 68.5"	3 478
PFH2163496S	58" / 62"	235" / 239"	65" / 72.5"	3 478

#### Characteristics

- Highly robust stainless steel structure
- Drain output
- High-quality finishing
- Overlapped joints for increased solidity
- TIG welding to facilitate cleaning
- S = Ski (raised)

#### Optional

- PFH216-TP : Overflow 1 ½" or 2"
- PFH216-ECH : Interior or exterior ladder for tank
- Available with 2 or no rails
- Cover in option



PFH216349S

## Rounded bottom tanks

### 72" width

Product No.	Width Int. / Ext.	Length Int. / Ext.	Height Int. / Ext.	Capacity gal. US
PFH216975	68" / 72"	92.5" / 96"	40.5" / 44.5"	908
PFH216975S	68" / 72"	92.5" / 96"	40.5" / 48.5"	908
PFH2161600	68" / 72"	92.5" / 96"	65" / 68.5"	1 557
PFH2161600S	68" / 72"	92.5" / 96"	65" / 72.5"	1 557
PFH2161580	68" / 72"	140" / 143"	40.5" / 44.5"	1 379
PFH2161580S	68" / 72"	140" / 143"	40.5" / 48.5"	1 379
PFH2162430	68" / 72"	140" / 143"	65" / 68.5"	2 363
PFH2162430S	68" / 72"	140" / 143"	65" / 72.5"	2 363
PFH2162150	68" / 72"	187.5" / 191"	40.5" / 44.5"	2 121
PFH2162150S	68" / 72"	187.5" / 191"	40.5" / 48.5"	2 121
PFH2163250	68" / 72"	187.5" / 191"	65" / 68.5"	3 186
PFH2163250S	68" / 72"	187.5" / 191"	65" / 72.5"	3 186
PFH2162680	68" / 72"	235" / 239"	40.5" / 44.5"	2 339
PFH2162680S	68" / 72"	235" / 239"	40.5" / 48.5"	2 339
PFH2164100	68" / 72"	235" / 239"	65" / 68.5"	4 009
PFH2164100S	68" / 72"	235" / 239"	65" / 72.5"	4 009

#### Characteristics

- Highly robust stainless steel structure
- Drain output
- High-quality finishing
- Overlapped joints for increased solidity
- TIG welding to facilitate cleaning
- S = Ski (raised)

#### Optional

- PFH216-TP: Overflow 1 1/2" or 2"
- PFH216-ECH : Interior or exterior ladder for tank
- Available with 2 or no rails
- Cover in option



PFH2161580S

## Rounded bottom tanks

### 95.5" width

Product No.	Width Int. / Ext.	Length Int. / Ext.	Height Int. / Ext.	Capacity gal. US
PFH2162113	92" / 95.5"	95" / 115"	62.5" / 70"	2 101
PFH2162113E	92" / 95.5"	95" / 115"	62.5" / 70"	2 101
PFH2163169	92" / 95.5"	143" / 162.5"	62.5" / 70"	3 157
PFH2163169E	92" / 95.5"	143" / 162.5"	62.5" / 70"	3 157
PFH2164225	92" / 95.5"	190" / 210"	62.5" / 70"	4 214
PFH2164225E	92" / 95.5"	190" / 210"	62.5" / 70"	4 214
PFH2165281	92" / 95.5"	237" / 257"	62.5" / 70"	5 259
PFH2165281E	92" / 95.5"	237" / 257"	62.5" / 70"	5 259
PFH2166400	92" / 95.5"	284" / 304"	62.5" / 70"	6 304
PFH2166400E	92" / 95.5"	284" / 304"	62.5" / 70"	6 304
PFH2164330E	92" / 95.5"	143" / 162.5"	74.5" / 82"	4 271
PFH2165089E	92" / 95.5"	190" / 210"	74.5" / 82"	5 700
PFH2166361E	92" / 95.5"	237" / 257"	74.5" / 82"	7 113
PFH2167333E	92" / 95.5"	284" / 304"	74.5" / 82"	8 527
PFH2168505E	92" / 95.5"	332" / 352"	74.5" / 82"	9 970

\* Available upon request:

Tanks size range from 10' large & 36' long - Up to 14 000 gallons

#### Characteristics

- Highly robust steel structure
- Drain output
- High-quality finishing
- Overlapped joints for increased solidity
- TIG welding to facilitate cleaning
- Front and steps made of steel with 4 rails
- Codes ending with E: supports every 2', making tanks more solid

#### Optional

- PFH216-TP : Overflow 1 1/2" or 2"
- PFH216-ECH : Interior or exterior ladder for tank
- Cover in option



PFH2163169E

# OSMOSIS

A dedicated and strong team with advanced knowledge of reverse osmosis, H2O Innovation develops unique water treatment systems and equipment. These are used in municipal and commercial applications in North America and everywhere else in the world. It is that same knowledge and unique dedication that are applied to the development of our maple equipment. Our products dedicated to maple farming are technologically advanced, efficient and user-friendly. Moreover, our team is formed of experts that know the ins and outs of sugar making. By doing business with H2O Innovation, you are teaming up with a team of over 600 employees deployed around the world. We therefore have the answer to all your maple equipment needs!

[h2oinnovation.com](http://h2oinnovation.com)

**h<sub>2</sub>o**  
innovation®

# ULTRAFILTRATION

**NEW**

Ultrafiltration clarifies maple water, which has the effect of removing all the impurities contained in it. The clarification by ultrafiltration is still fairly unknown by maple syrup producers, but among other things to disinfect sap for bottling process. This type of unit also applies to birch water. Ultrafiltration disinfection can also lengthen the waiting time in the tank of the filtered sap water by these membranes. The filtration unit allows to keep more than 98% of the water, unlike a reverse osmosis unit that operates at about 80%.

## Clarifying machine by ultrafiltration (UF)

Product No.	Description
PFH-UF-1	Clarifier 10 gpm
PFH-UF-2	Clarifier 20 gpm
PFH-UF-3	Clarifier 30 gpm
PFH-UF-4	Clarifier 40 gpm



BEFORE AFTER

## Filtration unit

Product No.	Description
SPH-UNI-00-10B	Horizontal vessel support with wheels
SPH-UNI-00-27A	Vessel insulation
PFH-POTEAU-240V	Bag filter 5 micron
SPH-FIL-09-10A	Complete pressure vessel assembly with membrane
SPH-UNI-16-01A	Electrical control box
SPH-UNI-00-26B	Flowmeter with wall support



## Membranes

Product No.	Description
H20-704040	Membrane H20 70-4040 - 4"
H20-70400	Membrane H20 70-400 - 8"
H20-SC-400	Membrane high brix H20 400 - 8"



H20-70400

## Membrane wash

Product No.	Description	Price
X-TEST-MEMB	Capacity test	\$50.00
X-LAVAMEMB4	4" membrane wash	\$115.00
X-LAVAMEMB	8" membrane wash	\$189.00
Extra for stainless steel vessels D-G		\$30.00





**KEVIN HOLY**  
750 taps

“As a small producer I have chosen H2O Innovation’s maple production equipment because of its reliability at the pumping station, the durability of its tubing in the woods and its easy installation. There is no mistaking for producers and amateurs.”

- KEVIN HOLY  
Montville, OH



GEN-45STDRO

Removes 25% to 30% of water per pass  
R.O. to 8 Brix Max  
5 Micron Pre-filter  
High Pressure Gauge  
High Pressure Bypass  
One Valve Operation  
Pneumatic Tires For Easy Mobility  
Only 24" wide making it easy to fit through most doors  
110 Volts / 12 Amps



GEN-100STDRO

Removes 25% to 30% of water per pass  
R.O. to 8 Brix Max  
5 Micron Pre-filter  
High Pressure Bypass  
High Pressure Gauge  
One Valve Operation  
Pneumatic Tires For Easy Mobility  
Only 24" wide making it easy to fit through most doors  
110 Volts / 12 Amps

**NEW**

**STARTING  
AT 1 875\$**



GEN-100HPRO-EXP

Removes 50% of water on the first pass  
R.O. to 8 Brix Max  
5 Micron Pre-filter  
Low Pressure Pump  
Low Pressure Shut Off (Automatic shut-down)  
High Pressure Bypass  
High & Low Pressure Gauge  
Concentrate & Permeate Flow Meters  
Stainless Steel Needle Valves  
Panel Mounted On/Off Switches, Gauges, Flow Meters  
Pneumatic Tires For Easy Mobility  
Only 24" wide making it easy to fit through most doors  
110 Volts / 18 Amps  
Aprox. 100 GPH Rate  
Expandable To 180 GPH w/ Second Tower

Note: NGMP osmosis all have a limited 1-year warranty

\*Might contain lead



# MINI-RO



PFH-MINI-RO-4

The Mini RO-4 is the smallest concentrator offered by H2O Innovation and the one that presents the best quality for price on the market. You won't find a better concentrator at a better price, guaranteed. It is capable of filtering up to 100 gal./hr and its capacity can be increased with the use of a 20" sediment filter. Easy to use, the Mini RO-4 is compact and requires little energy.



PFH-MINI-RO-8

The Mini RO-8 is a small concentrator on wheels built with the same parts as the bigger concentrators. Its great yield of 500 ga./hr is done with less energy. The Mini RO-8 will satisfy the serious producer.

Product No.	Dimensions	Gal./hr	Membranes	Pressure pump	Volts / Amps.
PFH-MINI-RO-4	52" x 23" x 32"	100	1 x 4"	1.5 HP	230/11
PFH-MINI-RO-8	63" x 21" x 40"	500	1 x 8"	5 HP	230/32
PFH-MINI-RO-4G (fuel)	62" x 23" x 32"	100	1 x 4"	6.5 HP	—

# CONCENTRATOR



PFH-CONCENTRATOR 200

Product No.	Dimensions	Gal./hr	Membranes	Pressure pump	Volts / Amps.
PFH-CONCENTRATOR 200/240V	21" x 52" x 52"	200	2 x 4"	1 HP	240/11
PFH-CONCENTRATOR 300/240V	30" x 52" x 52"	300	3 x 4"	1.5 HP	240/13

The Concentrator is a small reverse osmosis system developed for the maple producer getting started. This equipment can concentrate between 200 and 300 gallons / hour at up to 10 Brix while using 2 to 3 membranes. Everything has been thought of so you can save: its initial cost is low, it consumes very little energy and it is quite compact. The Concentrator is a reliable equipment that will allow the producer to perfect its technique.

\*Might contain lead



# ECONOX

Product No.	Model gal/hr	Max concentration	Nb membranes	Feed pump	Pressure pump	Volts / Amps.
PFH-ECO18ERA12	400 to 600	8 to 11	1	1 HP	5 HP	240/39
PFH-ECO18ERA20	400 to 600	8 to 11	1	2 HP	7.5 HP	240/54
PFH-ECO28ERA12	500 to 1 200	8 to 12	2	1 HP	5 HP	240/47
PFH-ECO28ERA20	800 to 1 200	8 to 12	2	2 HP	7.5 HP	240/64
PFH-ECO38ERA20	800 to 1 300	8 to 14	3	2 HP	7.5 HP	240/73
PFH-ECO48ERA20	800 to 1 400	8 to 16	4	2 HP	7.5 HP	240/81
PFH-ECO48ERA30*	1 200 to 2 000	8 to 12	4	2 x 2 HP	7.5 HP	240/92

\*Higher flow

\*\*Approximative flow with a 2 °Brix sap at 46.4 °F (8 °C)

Ready to use, the Econox is easy to operate and offer the best quality – performance relation on the market. Quiet, this compact concentrator can execute a rinse-wash cycle in less than 1h in its integrated washing tank. The Econox can be increased and accept up to 7 membranes to reach 2 000 gallons/ hour. It's capacity can be increase once more as it is possible to modify it into a High Brix equipment. Moreover, this concentrator can be automated using the Smartrek Technology. The Econox will never let you down, even during the peak of the season. Furthermore, its compact design will allow you to use it in smaller concentration rooms.





# SUPRA

Product No.	Model gal/hr	Max concentration	Pressure pump	Volts / Amps.
PFH-SUPRA-4-2-P	1 600 to 2400	12 to 16	2	240/136
PFH-SUPRA-6-2-P	1 800 to 3 000	14 to 18	2	240/146
PFH-SUPRA-7-2-P	2 000 to 3 200	16 to 22	2	240/166
PFH-SUPRA-8-2-P	2 200 to 3 200	14 to 18	2	240/176
PFH-SUPRA-9-3-G	3 000 to 4 000	15 to 22	3	240/234
PFH-SUPRA-10-3-G	2 500 to 4 200	16 to 25	3	240/244
PFH-SUPRA-12-3-G	3 200 to 4 500	16 to 22	3	240/264
PFH-SUPRA-15-3-G	3 300 to 4 800	17 to 27	3	240/294
PFH-SUPRA-12-4-G	3 300 to 6 000	8 to 27	4	240/312
PFH-SUPRA-15-4-G	3 300 to 6 000	12 to 27	4	240/342

\*Approximative flow with a 2 °Brix sap at 46.4 °F (8 °C)

The Supra is the concentrator meant for the serious producer looking for a performant equipment that can process an important quantity of maple water. The Supra can concentrate between 1 600 and 6 000 gallons/hour using 4 to 21 membranes. Moreover, it is possible to concentrate while cleaning a portion of the system thanks to its redundant operation sequences. The Supra is a robust equipment that will offer a continuous production, even during high production periods. It is possible to modify the Supra to make into a Supra High Brix and to automate it using the Smartrek Technology.

## 100% Stainless steel pre-filter housing

Product No.	Description
BONBN1-W5L2	Pre-filter housing only 5 X 20"
SPH-F0501	1 pre-filter housing with bypass valve
SPH-F0502	2 pre-filter housings with bypass valve
SPH-F0503	3 pre-filter housings with bypass valve

The bypass valve allows you to go around the main pre-filter when doing a wash so you won't clog up your system.





---

**CREATOR OF THE  
HIGH BRIX  
TECHNOLOGY**

---

**PATENTED TECHNOLOGY**

# O HIGH

## Let's develop the flavours!

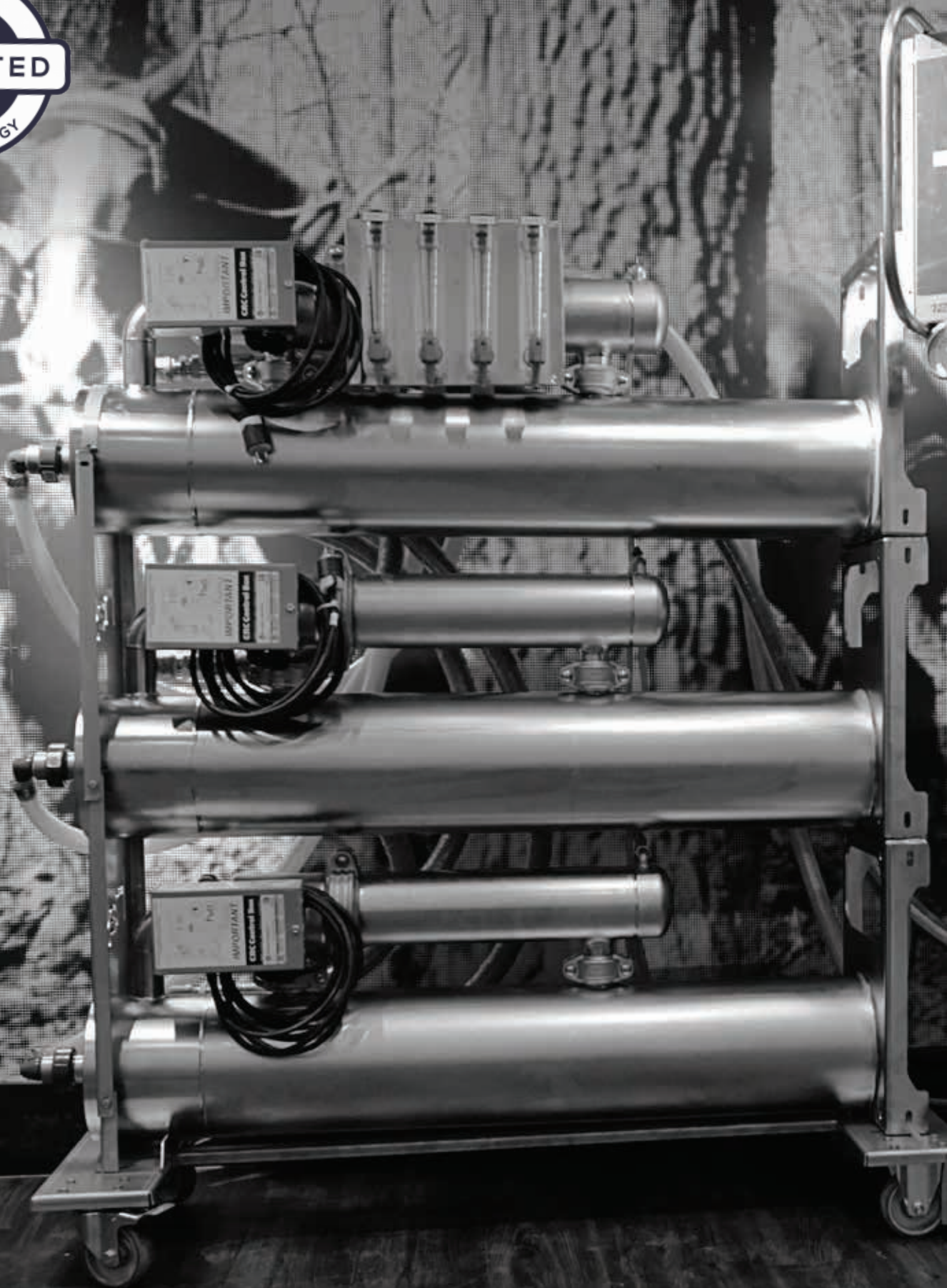
This exclusive process developed by H2O Innovation is based on its advance knowledge of membrane filtration. The High Brix concentration process can concentrate up to 45° Brix in one or two passes. This is made possible by the addition of membranes and the use of more performant booster pumps. Since your concentrate comes out of the concentration phase at a high brix level, the evaporation process with flue pans is not necessary anymore. The concentration phase is therefore followed by the cooking process that takes place in the specially designed Finishing rig. There, the syrup is cooked slowly at equal temperature in the flat pans to impart a maximum of flavour.

This advanced technology is simple to use and grants you the ability to plan your production. The equipment using the High Brix technology is capable of concentrating a large quantity of maple water while saving you time and energy. Go on, make the change. It's worth it! Using a High Concentration machine will also allow you to save on your oil consumption. You will use only half the oil you would normally use with an evaporator if you use the finishing rig. Our High Brix equipment are eligible to financial support.

With a refrigerated tank, the sap can be preserved for many days. The producers can thus enjoy a better quality of life. Thanks to the High Brix technology they can easily choose the boiling days based on their agenda, which grants them profitability and an incomparable flexibility. Depending on the finishing rig's dimensions, it is even possible to reach a production speed of more than 7 barrels per hour with only one evaporator.

# LIBRIX

h2o   
innovation®



# ECONOX HIGH BRIX

## 35° BRIX IN ONE PASS

Transform your Econox into an Econox High Brix. New booster pump and vessels optimize the performance of your regular Econox while maintaining all of its advantages.

Take advantage of the High Brix technology exclusive to H2O Innovation and increase your concentration capabilities today.

### Econox High Brix

Product No.	Membranes	Pressure pump	°Brix	Volts / Amps.	GPH / °Brix
PFH-ECO20HB41	4 + 1	1 x 3 HP	30 to 34	240 / 110	1100 / 30
PFH-ECO20HB42	4 + 2	1 x 3 HP	30 to 34	240 / 122	1200 / 30
PFH-ECO20HB52	5 + 2	1 x 2 HP 1 x 3 HP	30 to 35	240 / 145	1300 / 35

\*Approximative flow with a sap around 2 °Brix at 8 °C

#### Included

- Horizontal support on wheels

#### Optional

- Stainless steel filter
- In-line refractometer
- Individual flowmeters kit



In-line refractometer





# SUPRA HIGH BRIX

## 35° BRIX IN ONE PASS

The Supra High Brix is another exclusivity from H2O Innovation. Highly efficient, this concentrator can also be automated using the Smartrek technology.

The high performance vessels used with the pressure pumps for an optimal result.

### Supra High Brix

Product No.	Membranes	Pressure pump	°Brix	Volts / Amps.	GPH/ °Brix
PFH-SUP40HB82	8 + 2	2 x 3 HP	30 to 32	240/220	2200/31
PFH-SUP40HB84	8 + 4	2 x 3 HP	30 to 35	240/244	2400/33
PFH-SUP40HB104	10 + 4	2 x 2 HP 2 x 3 HP	34 to 35	240/290	2600/35
PFH-SUP40HB156	15 + 6	3 x 2 HP 3 x 3 HP	34 to 35	240/390	3900/35

### Options Supra High Brix

Product No.	Description	Volts / Amps.
PFH-SC-KIT-1	1 High Brix vessel, vessel rack and flowmeter	240/12
PFH-SC-KIT-2	2 High Brix vessels, vessel rack and flowmeter	240/24
PFH-SC-KIT-3	3 High Brix vessels, vessel rack and flowmeter	240/36
SPH-UNI-00-11A-2HP	Overload pump 2 HP	240/12
SPH-UNI-00-11A-3HP-5	Overload pump 3 HP	240/17
SPH-UNI-04-18A	Overload pump 5 HP	240/21
ERAPRMAP-RF-40	Refractometer 0-33%	-

The packages include a booster pump, a vessel rack and the necessary equipment (valves, flowmeters, etc.)



## Automation of a concentrator

Product No.	Description
ERAAUTOECOS	Econox Automation
ERAAUTOSUPS	Supra Automation

Automation include all automated valves, a pump for chemical products, flowmeters and pressure transmitters to allow a remote readings and full control. Select the function cycles, concentration / wash / rinse, and all that without being near your equipment.

Works with you Smartrek system, you can control everything at your fingertips.



ERAPD195240



ERAPRMAP-RF-40

## Organic chemical products



H2O Innovation can provide you with a letter certifying that all of our products sold at our points of service are approved for the Canadian Organic Standard in agricultural farming. This letter will simplify your accreditation by considerably reducing the number of entries of inputs to be sent. H2O makes it easier for you, the whole process is already done!

Product No.	Description	Price
CHE-BIOMEMBRANE-1G	Bio-membrane 4L	\$32.00
CHE-C6H807-1	OptiClean A 1 lb	\$15.00
CHE-C6H807-4	OptiClean A 4 lbs	\$29.00
CHE-C6H807-25	OptiClean A 25 lbs	\$99.00
CHE-OXISAN-1G	Oxisan 1 gal.	\$39.50
CHE-NA2S205-1.5LBS	Sodium metabisulfite 1.5 lb - 1/4 cup per membrane	\$15.00
CHE-NA2S205-5LBS	Sodium metabisulfite 5 lbs - 1/4 cup per membrane	\$29.00
CHE-DRY-REM-1G	Storage solution (dry 1 gal. US)	\$25.00
CHE-C6H807-55LBS	Citric acid 55 lbs (bag)	\$139.00
ERAALCOOL4L	70% ISOPROLYL alcohol 4L	\$19.95
ERAALCOOL20L	70% ISOPROLYL alcohol 20L	\$52.31
ERAALCOOLBAR	70% ISOPROLYL alcohol barrel 45 gal.	\$449.00
CHE-NAOCL-5G	Sodium hypochlorite 12%	\$40.00
ERAVINGLA20L	Glacial acetic acid	\$95.95
ERA170POU	Celite 545 filtering powder	\$37.50
ERA170POUHY	Hyflo Super-Cel filtering powder	\$37.50
ERACANOLA	Organic canola oil 500ml	\$9.99
ERACANOLA1L	Organic canola oil 1L	\$14.35
ERATOURNESOL	Organic sunflower oil	\$12.44

## Chemical products & accessories

Product No.	Description	Price
CHE-BASIC50LBS	Basic soap in powder 50 lbs	\$165.00
CHE-C3H802-4L	Propylene glycol 4l	\$45.00
CHE-NAOH-4KG	Sodium hydroxide (4 Kg) Soap	\$25.00
CHE-NAOH-50LBS	Sodium hydroxide (50 lbs) Soap	\$65.00
CHE-REMISAGE-1G	Storage solution with glycol	\$43.00
ERACARTHAM	Cartham oil	\$15.25
COLR59200-10	pH paper	\$22.50
ERASUPCL20L	Super Clean 20l	\$128.25
ERASUPCL4L	Super Clean 4l	\$30.50
ERAPISTALC5	5ml alcohol doser gun	\$51.25
ERAPISTALC15	15ml alcohol doser gun	\$59.25
KIT-08L	5L back pack tank and 15ml doser gun kit	\$96.00
ERAALCOOLAD2J	Tapping alcohol 4l AD2J	\$29.95
CHE-HCL-1G	Chloridric acid 1 gallon	\$52.00
ERAICRE-SET	Stainless steel cleaner - Kit	\$125.00
ERAICRE-500	Stainless steel cleaner - bottle only	\$62.50
PWT-ULTRA-BIOMEMBRANE-1G	Ultra Bio-Membrane 4L	\$45.00
PWT-LAVASOLVII-5G	Lavasol7 - 5 gal.	189.00
SPH-COND3V	Hand conductivity meter	\$20.00



ERAPISTALC15



CHE-C6H807-1



ERAPISTALC5



CHE-NAOCL-5G



KIT-08L



CHE-REMISAGE-1G



CHE-BIOMEMBRANE-1G



SPH-COND3V



PWT-ULTRA-BIOMEMBRANE-1G



PWT-LAVASOLVII-5G

## Filtration accessories for reverse osmosis

Product No.	Description	Price
H2O-520	H2O Innovation 5 micron cartridge, 20" box of 25	\$4.05 / each
PURPX05-9-7/8	Purtrex cartridge 5 microns 9" 7/8 case of 40	\$3.00 / each
PURPX05-20	Purtrex cartridge 5 microns 20" case of 20	\$4.35 / each
ERAROSCART	Rosko washable cartridge 60 wicks	\$40.85
ERA1702X20	Cartridge prefilter bag 20" (pkg 12)	\$9.35
ERA1702X20VELCRO	Cartridge prefilter velcro 20"	\$5.25
ERA1702X20ELASTIC	Cartridge prefilter rubberbands 20"	\$4.83
ERARONBOIT	Ronvik clear housing	\$29.00
ERARONGRIL	Ronvik screen filter 10"	\$9.00
ERARONJOIN	Ronvik gasket	\$2.00
ERARONPREF	Ronvik prefilter 1" 1/2	\$49.00
ERARONTETE	Ronvik prefilter head	\$25.00
ERAROSBOIT	Rosko clear housing	\$66.00
ERAROSPREF	Rosko washable prefilter 1" 1/2	\$108.00
PEN150069	Complete sediment prefilter 20"	\$78.00
ERAROSTETE	Rosko prefilter head	\$50.25
ERA005515	Bag filter 7" x 30" 5 microns	\$12.75
FSIFB-PONG5X01-FS	Bag filter 5", 5 microns,	\$14.95
SPH-SUP8-12-09A	Bag filter and lateral support 5 microns	\$825.00
PIE-B-1	Piedmont coupling 1"	\$35.00
PIE-B-1-1/4	Piedmont coupling 1" 1/4	\$39.00
PIE-B-1-1/2	Piedmont coupling 1" 1/2	\$42.00
PIE-B-4	Piedmont coupling 4 "	\$179.00
SPH-UNI-06-35A	Victaulic coupling 1" x 1" 1/4 NPT (elbow)	\$34.00
SPH-UNI0613A	Victaulic coupling 1" x 1" NPT (straight)	\$25.00
FSIFB-PONG 50x01-FS	Bag filter 50 Microns	\$14.95



H2O-520



SPH-SUP8-12-09A



FSIFB-PONG5X01-FS



PEN150069



ERARONPREF



PIE-B-1

## Filtration accessories for reverse osmosis

Product No.	Description	Price
SPH-UNI0544A	Bottom membrane sleeve	\$59.00
SPH-UNI0545A	Bottom membrane sleeve - 70 400 cap	\$59.00
SPH-UNI0546A	Membrane sleeve cap - 70 400	\$59.00
SPH-UNI0572A	Membrane sleeve adapter	\$25.00
UCUP904	U-cup 4"	\$9.00
UCUP908	U-cup 8"	\$12.00
FLOZ 6013	Flowmeter 1 to 10 gpm	\$89.00
PFHEXTRACT	Membrane extractor (puller)	\$79.00
SPH-COND120V	Assembled conductivity meter 120 V	\$315.00
SPH-UNI-16-01A	Pressure control with protection	\$399.00
ERACAISREM	Membrane storage vessel 8"	\$225.00
SPH-UNI-00-16A	Membrane storage vessel 4"	\$79.00
POM022-1080	Prefilter key	\$9.99
FLOK4	Flowmeter 1 to 10	\$119.00
FLOK5	Flowmeter 2 to 14	\$119.00
FLOK7	Flowmeter 5 to 35	\$119.00
ORIEPDM119	H <sub>2</sub> O O'Ring sleeve (small)	\$0.75
ORIEPDM123	H <sub>2</sub> O O'Ring manchon (big)	\$0.77
ORIEPDM366	O'Ring 8" couvercle caisson membrane	\$6.50
POM560-5080	Mini-RO pump	\$1 085.00
POM560-5086MARA-THON	Concentrator pump	\$1 185.00
AIR01152443	Temperature control	\$150.00



ERACAISREM



POM022-1080



## H<sub>2</sub>O Innovation Pressure Hose for Osmosis

Product No.	Description	Price
SSE1X24BSPP-1200	Hose 1" x 24"	\$99.00
SSE1X60BSPP-1200	Hose 1" x 60"	\$149.00
SSE1X84BSPP-1200	Hose 1" x 84"	\$169.00

\*Tested at 1 200 psi. Food grade. Custom sizes available.



# EVAPORATORS



# ROOKIE



**STARTING  
AT 3 500\$**

## THE ROOKIE

To perfect your technique

The Rookie evaporator is the smallest evaporator offered by H2O Innovation. Made entirely of stainless steel, this high quality design is similar to the bigger evaporators. This equipment is offered at a competitive price and is easy to operate.

# HOBBYIST

**NEW**

**h<sub>2</sub>O**  **NGMP**  
innovation



12" x 20"  
16" x 20"  
Propane



2' x 3'



2' x 4'



2' x 6' HP



2' x 4'

## H2O-NEXT GEN

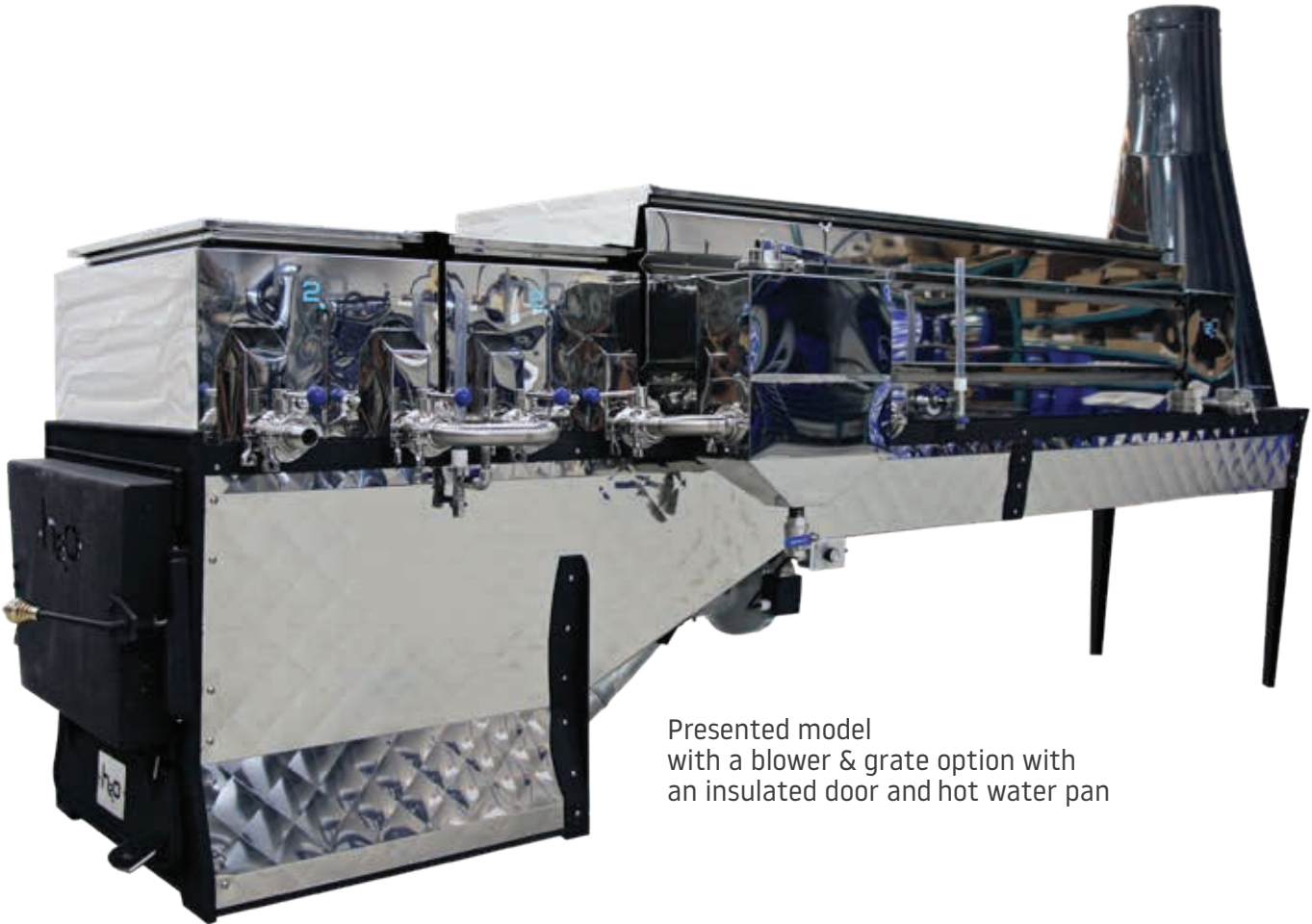
For the sugar maker who is beginning

Next Generation evaporators are designed for all types of sugar makers, either with a manual system, or with control & float, you will manage to find what you need with this line. Made in USA. See [www.nextgenmaple.com/evaporators](http://www.nextgenmaple.com/evaporators) for more details.





# TRADITION



Presented model  
with a blower & grate option with  
an insulated door and hot water pan

## STARTING AT 5 500\$

### THE TRADITION

A tradition of quality

Recently reviewed and improved the solid conception of the Tradition teamed with stainless steel valves and a thick cast iron door make this evaporator ideal for all producers. Moreover, its float box includes a decantor to facilitate the elimination of sugar sand.

# TSUNAMI



Chrome adjustments gauge

## THE TSUNAMI

### A force of nature

The Tsunami evaporator is the biggest and best performing evaporator offered by H2O Innovation. Its optimized design makes it one of the best high performance evaporators on the market. The boiling is done continuously, without heat peaks, thanks to the constant temperature of the insulated combustion chamber.

This therefore allows for a continuous and stable flow. Moreover, this evaporator includes a fan with variable control to produce optimum combustion regardless of the type of wood used. The operation of the Tsunami is simple and allows you to maximize your work without requiring more effort. The efficiency of the Tsunami can be increased as it is possible to convert it into a High Brix finishing rig.

# CLASSIC

## THE CLASSIC

A timeless classic

The Classic, an oil evaporator is a highly reliable piece of equipment. The Classic is sold fully equipped and ready to use. It will offer you peace of mind on top of being easy to operate. The Classic evaporator can be modified to be used in conjunction with a High Brix concentrator.

The Carlin burner which it is equipped with is easy to adjust and has a low maintenance cost. Since this type of burner is popular amongst sugar makers, you will easily and quickly find an authorized technician in your area to help you.



JUSTIN &  
JOCELYN LAMB  
3 000 taps

«My wife and I have a maple farm and we use an H2O Innovation oil evaporator (3 x 10) with preheater and hoods for boiling. We also have a 3-vessel osmosis, 1 800 gal./h. Quality of equipment and service could not be higher. The RO easily treats the sap and the evaporator efficiently boils, which allows us to obtain a high-quality syrup year after year. Keep on with your great work!».

- LAMB FAMILY MAPLE  
Waterville, VT

# FINISHING RIG

For well-developed flavours

Its patented technology of High Brix concentration makes this evaporator highly efficient, capable of producing between 20 and 130 gallons of syrup per hour.

It is also easy to clean as it has no flue pan and a pan cleaner can be fitted on top of the flat pans. Unique, the Finishing Rig will offer you a high quality syrup without the headache.

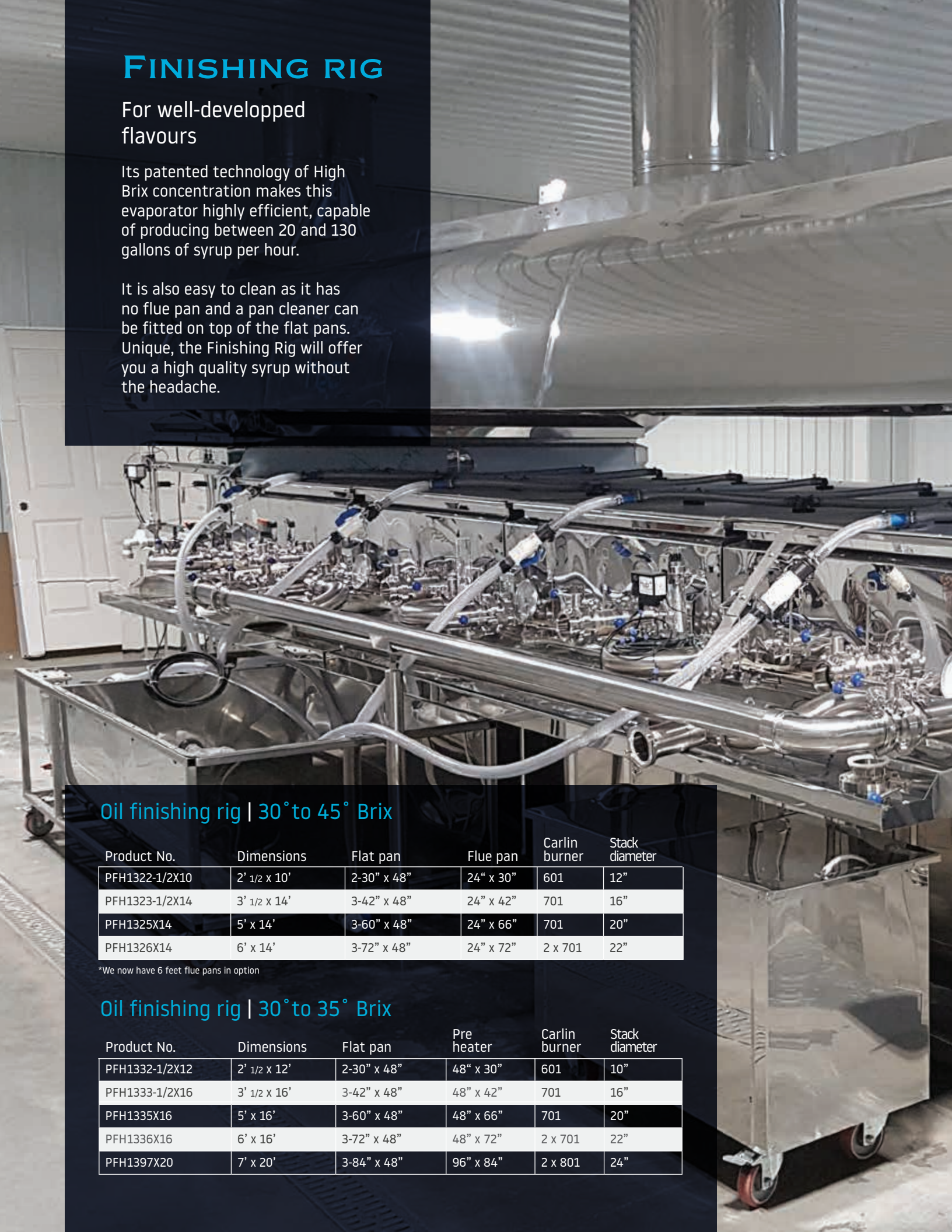
## Oil finishing rig | 30° to 45° Brix

Product No.	Dimensions	Flat pan	Flue pan	Carlin burner	Stack diameter
PFH1322-1/2X10	2' 1/2 x 10'	2-30" x 48"	24" x 30"	601	12"
PFH1323-1/2X14	3' 1/2 x 14'	3-42" x 48"	24" x 42"	701	16"
PFH1325X14	5' x 14'	3-60" x 48"	24" x 66"	701	20"
PFH1326X14	6' x 14'	3-72" x 48"	24" x 72"	2 x 701	22"

\*We now have 6 feet flue pans in option

## Oil finishing rig | 30° to 35° Brix

Product No.	Dimensions	Flat pan	Pre heater	Carlin burner	Stack diameter
PFH1332-1/2X12	2' 1/2 x 12'	2-30" x 48"	48" x 30"	601	10"
PFH1333-1/2X16	3' 1/2 x 16'	3-42" x 48"	48" x 42"	701	16"
PFH1335X16	5' x 16'	3-60" x 48"	48" x 66"	701	20"
PFH1336X16	6' x 16'	3-72" x 48"	48" x 72"	2 x 701	22"
PFH1397X20	7' x 20'	3-84" x 48"	96" x 84"	2 x 801	24"





RUTH  
& GLEN GOODRICH  
200 000 taps

"Over the past year we have started to put together a new sugarhouse, the woods and facility are designed to handle up to 200 000 taps. We needed a very unique boiling system. Working together with the H2O team, we created a high tech RO & Evaporator system.

The 20' x 7' High Brix evaporator will be boiling 30 percent concentrated sap this coming season. High efficiency, easy cleaning and maximum control of finished product is the goal"

- RUTH & GLEN GOODRICH  
Eden, VT

**GOODRICH MAPLE FARM**  
EDEN, VERMONT, UNITED STATES  
200 000 TAPS

## Flue pans (s/s 22 ga.)

Product No.	Dimensions
PFH14018X48G	18" x 48" x 13" - 6 flues (Economic)
PFH14024X48G	24" x 48" x 15" - 8 flues (Economic)
PFH14024X60G	24" x 60" x 15" - 8 flues (Economic)
PFH14030X60G	30" x 60" x 15" - 9 flues (Economic)
PFH14018X48	18" x 48" x 13" - 6 flues
PFH14024X48	24" x 48" x 15" - 8 flues
PFH14024X60	24" x 60" x 15" - 8 flues
PFH14030X60	30" x 60" x 15" - 9 flues
PFH14036X72	36" x 72" x 20" - 12 flues
PFH14036X84	36" x 84" x 20" - 12 flues
PFH14036X96	36" x 96" x 20" - 12 flues
PFH14036X108	36" x 108" x 20" - 12 flues
PFH14042X96	42" x 96" x 20" - 14 flues
PFH14048X48	48" x 48" x 20" - 16 flues
PFH14048X72	48" x 72" x 20" - 16 flues
PFH14048X96	48" x 96" x 20" - 16 flues
PFH14048X108	48" x 108" x 20" - 16 flues
PFH14048X120	48" x 120" x 20" - 16 flues
PFH14060X48	60" x 48" x 20" - 21 flues
PFH14060X72	60" x 72" x 20" - 21 flues
PFH14060X96	60" x 96" x 20" - 21 flues
PFH14060X120	60" x 120" x 20" - 21 flues
PFH14072X72	72" x 72" x 20" - 28 flues
PFH14072X96	72" x 96" x 20" - 28 flues
PFH14072X120	72" x 120" x 20" - 28 flues



PFH14018X48

### Optional

- Available with a complete pan kit and fittings (butterfly valves included.)
- Available with flue of 14" total (7" in the pan & 7" in the fire) 1.75x



## Finishing pans

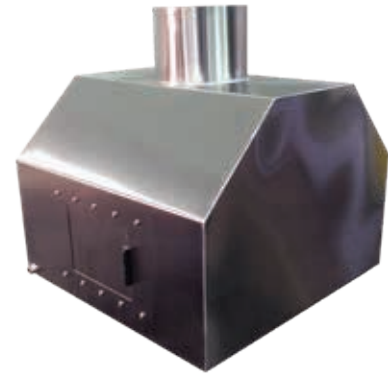
Product No.	Dimensions
PFH14724X36	24" x 36" x 14"
PFH14724X48	24" x 48" x 14"
PFH14724X60	24" x 60" x 14"
PFH14724X72	24" x 72" x 14"
PFH14730X36	30" x 36" x 14"
PFH14730X48	30" x 48" x 14"
PFH14730X60	30" x 60" x 14"
PFH14730X72	30" x 72" x 14"
PFH14736X36	36" x 36" x 14"
PFH14736X48	36" x 48" x 14"
PFH14736X60	36" x 60" x 14"
PFH14736X72	36" x 72" x 14"
PFH14736X96	36" x 96" x 14"
PFH14742X48	42" x 48" x 14"
PFH14760X48	60" x 48" x 14"
PFH14760X50	60" x 50" x 14"
PFH14772X48	72" x 48" x 14"



PFH14730X60

## Next Gen steam dome - Custom made

Steam dome available, air feed system and other custom made products in the H2O Next Gen line. Contact us for more details.



## Insulation strips between the pans

Product No.	Dimensions	Price
PFHBANIS018	18"	\$30.00
PFHBANIS024	24"	\$35.00
PFHBANIS030	30"	\$38.00
PFHBANIS036	36"	\$45.00
PFHBANIS042	42"	\$52.00
PFHBANIS048	48"	\$60.00
PFHBANIS060	60"	\$75.00



## Float box

Product No.	Description
SPH-153101	Single input float box, Rookie series - 1 1/2"
SPH-153103	Double input float box, Classic series - 2"
SPH-153102	Single transfer float box Rookie series - 1 1/2"
SPH-153104	Transfer float box with drain, Classic series - 2"
ERABOUCHON	Conical cap arm float



SPH-153104

## Pan washer base (without cover)

Product No.	Description	Dimensions
PFH159001	Base simple pan washer with support - 1 HP	34" x 33"
PFH159002	Base double pan washer with support - 2 HP	50" x 33"
PFH159003	Base triple pan washer with support - 2 HP	74" x 33"
PFH159004	Base quadruple pan washer for wash on evaporator - 5 HP	68" x 28"

\*Do not included covers for flat pans wash  
neither nozzles for flue pans wash.



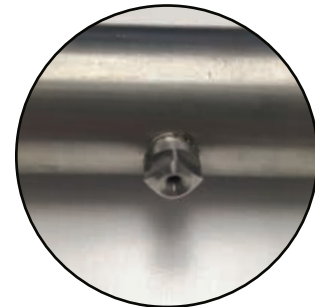
PFH159001  
PFH159224X36

## Cover only with sprinklers option

Product No.	Description
PFH15924X36	Cover only with sprinklers 36"
PFH15924X42	Cover only with sprinklers 42"
PFH15924X48	Cover only with sprinklers 48"
PFH15924X60	Cover only with sprinklers 60"
PFH15924X72	Cover only with sprinklers 72"
PFH15942X48	Cover only with sprinklers 42" x 48"
PFH15960X48	Cover only with sprinklers 60" x 48"
PFH15972X48	Cover only with sprinklers 72" x 48"

## Pipe and nozzle for flue pan option

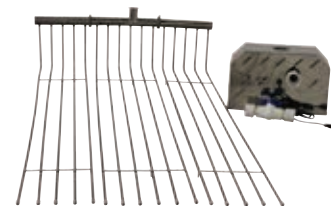
Product No.	Description
PFH15900	Pipe and nozzle for flue pan washer - 3' to 6' (standard)



PFH15900

## Air injector

Product No.	Description
PFH154130EC	2' 1/2 Standard - 9 tubes
PFH154136EC	3' Standard - 12 tubes
PFH154148DL	4' Deluxe - 16 tubes
PFH154148EC	4' Standard - 16 tubes
PFH154160DL	5' Deluxe - 21 tubes
PFH154160EC	5' Standard - 21 tubes
PFH154172DL	6' Deluxe - 28 tubes
PFH154172EC	6' Standard - 28 tubes
PFH15424-36	Flat pan rack 2' to 3'
PFH15448-72	Flat pan rack 4' to 6'
HIBM116472	Injector turbine
ERAFILCH10X20	Carbon filter 10" x 20"
ERAFILAIR10X20	Air filter 10" x 20"
PFH154130	Complete injector unit Additional tube



PFH15418DL



ERAFILCH10X20



## Even Flow thermoregulator

Product No.	Description	Price
ERATHEH2OPB	Even Flow automatic valve controller with barometric control box	\$1 595.00

### Characteristics

- In order to control efficiently the temperature of your equipment, the thermoregulator includes a barometer and a fast engine. Its user-friendly interface will facilitate your work and so will its quality connections. For every 1/10 of a degree Farenheit over the targetted value, the valve opens of 10%.



ERATHER2FX1,5NPT



ERATHER1,5FX1NPT



ERATHER2FX1,5F



ERATHER2C8



ERATHEH2OPB

## Adapters for Even Flow thermoregulator

Product No.	Description
ERATHER2C8	Even Flow automatic valve controller adapter
ERATHER1,5FX1NPT	Even Flow automatic valve controller adapter
ERATHER2FX1,5F	Even Flow automatic valve controller adapter
ERATHER2FX1,5NPT	Even Flow automatic valve controller adapter

## Flow inverter

Product No.	Description
PFH16011/2	Flow inverter 1 1/2" stainless steel
PFH1602	Flow inverter 2" stainless steel

### Characteristics

- Price for a brand new H2O Innovation evaporator  
Also available for new or used evaporators from other manufacturers or used H2O Innovation evaporators (additional fees).



## Complete pan kits available for all brands of evaporators



# FINISHING



## Finishing

### Syrup filter press

Product No.	Description
PFH156107	Syrup filter press 3 plates 10" without pump
PFH156107-01	Syrup filter press 3 plates 10" with OBERDOFER pump ass. electric engine with belt
PFH156107-02	Syrup filter press 3 plates 10" with ass. pneumatic diaphragm pump 1/2"
PFH156107-03	Syrup filter press 3 plates 10" with 3 GPM electric diaphragm pump
PFH156107-06	Syrup filter press 3 plates 10" with 6 GPM electric diaphragm pump
PFH156110	Syrup filter press 6 plates 10" without pump
PFH156110-01	Syrup filter press 6 plates 10" with OBERDOFER pump ass. electric engine with belt
PFH156110-02	Syrup filter press 6 plates 10" with ass. pneumatic diaphragm pump 1/2"
PFH156110-03	Syrup filter press 6 plates 10" with 3 GPM electric diaphragm pump
PFH156110-06	Syrup filter press 6 plates 10" with 6 GPM electric diaphragm pump
PFH156110P	Syrup filter press 6 plates 10" with stainless steel piston pump 275 gal./h



PFH156110-02

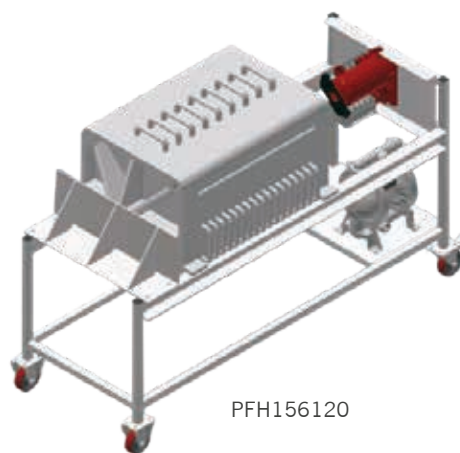


PFH156107-03



### Syrup filter press 20 inches

Product No.	Description
PFH156120-7	Syrup filter press 7 plates 20" with pneumatic diaphragm pump 1"
PFH156120-9	Syrup filter press 9 plates 20" with pneumatic diaphragm pump 1"
PFH156120-11	Syrup filter press 11 plates 20" with pneumatic diaphragm pump 1"



PFH156120

### Syrup filter press parts

Product No.	Description
SPH-PRE1210A	U tube for syrup filter press
SPH-156110-B01-01	Stainless steel frame with wheels & pans
ERABLFIL7	Filtration block 10", 3 plates
ERABLFIL10	Filtration block 10", 6 plates



SPH-PRE1210A

## Pump for syrup filter press

Product No.	Description
PRO-04-01	Engine assembly and OBERDOFER pump for syrup filter press
PRO-04-02	Diaphragm pneumatic pump assembly with base & valves
PRO-04-03	Assembly 3 GPM electric diaphragm pump with base & valves
PRO-04-04	3 GPM electric diaphragm pump & starter
PRO-04-05	6 GPM electric diaphragm pump & starter
PRO-04-06	Assembly 6 GPM electric diaphragm pump with base & valves
DYIDS04SAITSS02-1/2	Diaphragm pump - s/s 1/2"
DYIDS04SAITSS01	Diaphragm pump 1"
DYIDSABC02	Regulator 1/4" for diaphragm
ERAPOM090	Hand pump
ERAPOMS-275	Piston pump, 275 gal/h, engine 1/2 c.v. s/s
ERAPOMS-600	Piston pump, 600 gal/h, engine 3/4 c.v. s/s
ERA156POMOBBER	OBERDOFER pump 1/2", brass

**NEW**

## Anti-foam injection pump

Product No.	Description
ERAPD195240	Anti-foam injection pump

### Installation

- Works really well on evaporators for anti-foaming, but also on reverse osmosis equipment for the automatic injection of chemical products

**NEW**

## Next Gen maple syrup bottling machine

Product No.	Description
GEN-WJB-20G	Next Gen maple syrup bottling machine - 20 gallons included : Double boiler 2 bottles at once



PRO-04-04

PRO-04-03



PRO-04-02



ERAPD195240



## Finishing accessories

Product No.	Description	Price
ERA17024PFILRD	Prefilter round press 24" (12/pkg)	\$16.11
ERA17024PRRD	Round filters 24" (1/pkg)	\$14.46
ERA170POLY10	Polyester filters 10" (18/pkg)	\$47.44
ERA170POL7	Polyester filters 7" (18/pkg)	\$34.94
ERA170PR10BL	Paper filter - white 10" (400 filters)	\$93.00
ERA170PR10GBL	Paper filter with loop - white 10"	\$106.50
ERA170PR7BL	Paper filter - white 7" (400 filters)	\$50.45
ERA1701080	Orlon filter # 8 (hat)	\$13.71
ERA170108P	Polyester filter # 8 (hat)	\$9.36
ERA170108PFE	Paper filter # 8 (12/pkg)	\$15.60
ERA17036X360	Orlon filter 36" x 36"	\$24.86
ERA170POU	Filter aid Celite 545, 50 lbs bag	\$37.50
ERA170POUHY	Filter aid Celite Hyflo, 50 lbs bag	\$37.50
ERAKASHER	Kasher (no-foam)	\$5.99
ERACANOLA	Canola oil 500 ml	\$9.99
ERACANOLA1	Canola oil 1L	\$15.25
ERATOURNESOL	Sunflower oil 1l	\$13.50
ERAGRAI14OZ	Food grade grease 14 oz.	\$13.75
PFH425GOBKAS	Cup for Kasher s/s (small)	\$14.00
ERA170PR20BLH	Paper filter 20" H <sub>2</sub> O (250 filters - case)	\$362.50
ERA170PR18BL	Paper filter 18" LS (200 filters - case)	\$250.00
ERA170PR20BL	Paper filter 20" D&G (250 filters - case)	\$389.00
ERA170PR7BL-T	Paper filter 7" Teknik (400 filters - case)	\$60.00



ERA170PR10BL



ERACANOLA



ERA170POU



ERA1701080



GEN-CFR01

## Maple sap filter

Product No.	Description	Price
ERA170105	7" support for 1 1/2" sap filter	\$35.95
ERA170116A	7" x 16" 50 microns loop sap filter	\$6.95
ERA170116L	7" x 16" 50 microns eyelet sap filter	\$6.95
ERA170120	7" support for 2" sap filter	\$35.95
ERA170130A	7" x 30" 50 microns loop sap filter	\$10.95
ERA170130L	7" x 30" 50 microns eyelet sap filter	\$10.95
GEN-CFR01	5 Quart Cone Filter Rack	\$125.00

## Round draw-off syrup tank

Product No.	Description	Price
PFH155105R	Round draw-off tank s/s 9" x 20" 5 gal.	\$315.00
PFH155112R	Round draw-off tank s/s 15" x 20" 12 gal.	\$385.00
PFH155125R	Round draw-off tank s/s 21" x 26" 25 gal.	\$469.00
PFH155135R	Round draw-off tank s/s 21" x 30" 35 gal.	\$525.00
PFH155140R	Round draw-off tank s/s 23" x 31" 40 gal.	\$575.00
PFH155125R-B	Econo. draw-off tank - barrel type 25 gal.	\$375.00
PFH155140R-B	Econo. draw-off tank - barrel type 40 gal.	\$450.00



PFH155125R

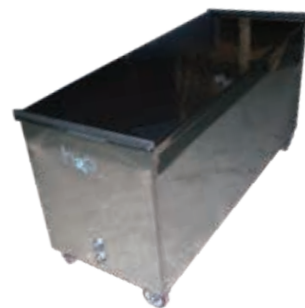
PFH155105R

### Characteristics

- Lid included - Filter support, draw-off tank support on wheels & faucet non included

## Double draw-off syrup tank

Product No.	Description	Price
PFH155220DBL	Rounded bottom double draw-off tank s/s 18" x 42" (2 x 20 gal.)	\$1 249.00
PFH155440DBL	Double draw-off tank (2 x 40 gal.) skirts set included	\$1 549.00



PFH155440DBL

## Double boiler

Product No.	Description	Price
PFH158112R	Double boiler 12 gal.	\$1 595.00
PFH158135R	Double boiler 35 gal. 1 element	\$2 595.00
PFH158135R-2	Double boiler 35 gal. 2 elements	\$2 935.00
WATBCN16N10SE	Heating element 3000W	\$425.00



PFH158112R

## Syrup filter holder

Product No.	Description	Price
PFH155105F	Syrup filter holder s/s 9" (1 hole)	\$15.00
PFH155112F	Syrup filter holder s/s 15" (1 hole)	\$109.00
PFH155125F	Syrup filter holder s/s 21" (2 holes)	\$140.00
PFH155140F	Syrup filter holder s/s 23" (3 holes)	\$170.00



PFH155125F

### Characteristics

- To suspend filters

## Wheel support for draw-off syrup tank

Product No.	Description	Price
PFH155112SR	Wheel support for draw-off syrup tank 15" (12 gal.)	\$125.00
PFH155125SR	Wheel support for draw-off syrup tank 21" (25 gal.)	\$130.00
PFH155140SR	Wheel support for draw-off syrup tank 23" (40 gal.)	\$145.00



PFH155112SR

### Characteristics

- To easily move your draw-off tank

## Maple butter mixer

Product No.	Description	Price
PFH15710	1 HP	\$1 995.00
PFH15720	2 HP	\$2 695.00



PFH15710

## Laddles & skimmers

Product No.	Description	Price
PFH425ECU6X8GR	Perforated skimmer 6" x 8"	\$50.00
PFH425ECU6X8L	Flat skimmer (large) 6" x 8"	\$50.00
PFH425LOU5	Round laddle 5"	\$60.00
PFH425LOU6C	Square laddle 6"	\$65.00
PFH425LOU7	Round laddle 7"	\$65.00
PFH425LOU8	Round laddle 8"	\$65.00
PFH425LOUPL8	Round laddle with flat side 8"	\$59.00
PFH425PLA12X16	Flared pan 12" x 16" x 6"	\$199.00
ERAPAL5X40	Wooden pallet for syrup tank	\$59.00



PFH425ECU6X8L



PFH425LOU5

## Brushes

Product No.	Description	Price
ERABR003	Spout brush - nylon handle	\$4.00
ERABR004	Spout brush - white nylon 1/4" dia x 3" x 8" long	\$4.00
ERABR020	Inside flue brush, black nylon # 97, 2" x 7"	\$18.25
ERABR025	Inside flue brush, white nylon 1/2" x 7"	\$20.95
ERABR027	Inside flue brush, white nylon, 2" x 7"	\$20.95
ERABR030	Inside flue brush, black nylon 4" x 7"	\$32.95



ERABR025



ERABR030

## Stainless steel barrels

Product No.	Description	Price
ERABARILINOX25-304	Barrel 25 gal. (Barinox) (30 gal. US) 1 plug	\$215.00
ERABARILINOX34-304	Barrel 34 gal. (Barinox) (40 gal. US) 1 plug	\$225.00
ERABARILINOX34-3042T	Barrel 34 gal. (Barinox) (40 gal. US) 2 plugs	\$240.00
ERABARILINOX40-304	Barrel 40 gal. (Barinox) (48 gal. US) 1 plug	\$250.00
ERABARINOV34-301	Barrel 301 34 gal. (Inovadrum) (40 gal. US) 1 plug	\$225.00
ERABARINOV34-3012T	Barrel 34 gal. (Inovadrum) (40 gal. US) 2 plugs	\$230.00
ERABARINOV45-301	Barrel 301 45 gal. (Inovadrum) (54 gal. US) 1 plug	\$295.00
PFH425ENTON	Funnel for barrel	\$64.00
W-INSCRIPTION	Lettering on barrel / per line	\$4.00 /line



ERABARILINOX34-304

### Characteristics

- NOTE: Additional fees to increase the number of plugs or change their location

## Plastic barrels

Product No.	Description	Price
ERABARILPLAS6GAL	Barrel 6 gal. (Plastica) (7.2 US gal)	\$59.50
ERABARILPLAS16GAL	Barrel 16 gal. (Plastica) (19.2 US gal)	\$79.00
ERABARILPLAS35GAL	Barrel 35 gal. (Plastica) (42 US gal)	\$119.00



ERABARILPLAS

## Accessories for barrels

Product No.	Description	Price
ERA412CLE	Drum key # 71805	\$18.95
ERA412CLEFON	Cast iron drum key	\$48.00
ERABARBOU3/4INOX	Cap for stainless steel barrel 3/4"	\$9.00
ERABARBOU2INOX	Cap for stainless steel barrel 2"	\$14.00
ERABARBOU2PF	Cap for plastic barrel - small thread 2"	\$5.75
ERABARBOU2PL	Cap for plastic barrel 2"	\$5.75
ERABARBOU2Z	Cap for Zinc barrel 2"	\$2.75
ERABARJOINT2	Barrel gasket 2"	\$1.10
PFH-ERALEVBAR	Barrel lever	\$69.00



ERA412CLEFON

## Calibration products

Product No.	Description	Price
ACERDEF	Off-flavour set	\$45.00
ACERCAL66	Calibration solution 66 - + .1 to 20 C	\$20.00
ACERCOLO5NCL	Acer color comparator syrup classification IISE/IMS	\$49.00
ERA65.803	Sampling test tube caps (by unit)	\$0.25
ERA67.743-1	Test tubes for sampling (by unit)	\$1.00



ACERCAL66



ACERCOLO5NCL



ERA65.803

ERA67.743-1



## Measuring instruments

Product No.	Description	Price
ERA412DEN0/10	Densimeter 0° to 10° Brix	\$22.45
ERA412DEN0/15	Densimeter 0° to 15° Brix	\$22.45
ERA412DEN45/75	Syrup densimeter 45° to 75° Brix	\$14.95
ERA412HYD	Syrup hydrotherm - no numbers	\$42.00
ERA412THENUM	Numeric thermometer Ystec with alarm	\$295.00
PFH425G0BDEN9	Densimeter cup 9"	\$33.00
PFH425G0BDEN12	Densimeter cup 12"	\$22.45
ERAH20101	Refractometer 0°-10° Brix   Maple sap	\$89.00
ERAH20103	Refractometer 0°-30° Brix   Concentrate	\$89.00
ERAH20108	Refractometer 0°-80° Brix   Syrup	\$99.00
BAS3A02B-02	Thermometer 3" OD x 2.5" stem 1/2 MPT, 25-125 °F	\$56.95
BAS3A02B-07	Thermometer 3" OD x 2.5" stem 1/2 MPT, 0-250 F	\$56.95
BAS3A12BV-50	Syrup thermometer 3" OD x 12 stem 1/2" MPT, 0-50 °F	\$56.95
BAS5A09BV-50	Syrup thermometer 5" OD x 9" stem 1/2 MPT, 0-50 °F	\$74.78
BAS3A12B-12	Thermometer 3" OD x 12 stem 1/2" MPT, 1000 °F	\$65.00
BAS3A12B-07	Thermometer 3" OD x 12 stem 1/2" MPT, 0-250 °F	\$56.95
ERAH20871	Digital refractometer 0 - 85%	\$239.00
FLOY63BL-30	Manometer 2.5" from 30inHg to 600 psi	\$29.00
FLOY100BLT-30	Manometer 4" from 30inHg to 5 psi	\$49.00
FLOY63BL100	Manometer 2.5" from 0 to 100 psi	\$29.00
FLOY63BL600	Manometer 2.5" from 0 to 600 psi	\$29.00



ERAH20101



ERA412DEN0/10



BAS3A12B-07



BAS5A09BV-50



FLOY63BI-30

## Continuous in-line reading syrup refractometer

Product No.	Description
ERAPRMAP-RF-70	Continuous in-line refractometer 0-33%

\*Calibrate precisely your syrup



ERAPRMAP-RF-70

**Complete line of classy models on next page**

Many bottle models are available to you this year. H2O Innovation offers the most beautiful models from our suppliers Vetro Elite & Valery Glass so you can showcase your syrup properly in a deserving container.





J | GALONE



K | MONTRÉAL



L | FESTIVAL



M | MODERN LEAF



N | ACERO

## Valery Glass bottle models

Model name	Product No.	Cap	Capacity	Weight	Height	Price /12
J   Galone	MIL-GAL-250	PP 28	250 ml	250 gr	161 mm	\$20.95
K   Montréal	MIL-MTL-375	PP 28	375 ml	350 gr	218 mm	\$26.95
L   Festival	MIL-FES-700	PP 31,5	700 ml	500 gr	310 mm	\$28.95
M   Modern Leaf	MIL-MDL-100	PP 24	100 ml	224 gr	134 mm	\$19.95
M   Modern Leaf	MIL-MDL-250	PP 24	250 ml	430 gr	165 mm	\$25.99
M   Modern Leaf	MIL-MDL-500	PP 28	500 ml	600 gr	200 mm	\$30.95
N   Acero	MIL-ACE-200	PP 28	200 ml	250 gr	235 mm	\$20.95

\*Cap not included

## AMPAK "sirop d'érable" bottle model

Product No.	Description	Price /unit
AMP-375	AMPAK glass bottle - 28mm cap not included	\$1.70



AMP-375

## Maple Leaf bottle model

Product No.	Description	Price /unit
LEAF10	Glass bottle 100 ml - cap included	\$1.45
LEAF25	Glass bottle 250 ml - cap included	\$1.99



LEAF10

## Elongated barrels bottle model - NuCan<sup>MC</sup>

Product No.	Description	Price /unit
IMP-BAR-500L	Tinplate bottle 500 ml (without cap) Light	\$1.95
IMP-BAR-500A	Tinplate bottle 500 ml (without cap) Amber	\$1.95
IMP-BOUNT38MM	Cap for NuCan® bottles	\$0.16



IMP-BAR-500L

IMP-BAR-500A



A | BARREL



B | BARREL LISCIA



C | MAPLE



D | ÉCOCHIC



E | ÉRABLE



F | HORIZON



G | CHIARA



H | PASSION



I | SILHOUETTE

## Vetro Elite bottle models

Model name	Product No.	Cap	Capacity	Weight	Height	Price /12
A   Barrel	VET-BAR-50	PP 18	50 ml	100 gr	78 mm	\$12.74
A   Barrel	VET-BAR-100	PP 24	100 ml	170 gr	97 mm	\$19.80
A   Barrel	VET-BAR-200	PP 28	200 ml	250 gr	117 mm	\$29.99
B   Barrel Liscia	VET-BAL-200	PP 28	200 ml	150 gr	117 mm	\$22.95
B   Barrel Liscia	VET-BAL-500	PP 28	500 ml	250 gr	142 mm	\$27.09
B   Barrel Liscia	VET-BAL-750	GPI 28/400	750 ml	350 gr	234 mm	\$31.00
B   Barrel Liscia	VET-BAL-750	PP 31,5	750 ml	400 gr	180 mm	\$41.25
C   Maple	VET-MAP-375	GPI 28/400	375 ml	350 gr	234 mm	\$30.96
D   Écochic	VET-ECO-250	PP 31,5	250 ml	250 gr	225 mm	\$13.05
D   Écochic	VET-ECO-500	PP 31,5	500 ml	400 gr	287 mm	\$15.03
D   Écochic	VET-ECO-750	PP 31,5	750 ml	500 gr	324 mm	\$20.09
E   Érable	VET-ERA-250	PP 28	250 ml	250 gr	167 mm	\$21.11
F   Horizon	VET-HOR-250	PP 28	250 ml	400 gr	180 mm	\$29.85
G   Chiara	VET-CHI-50	GPI 22/400	50 ml	70 g	79 mm	\$6.73
G   Chiara	VET-CHI-100	GPI 28/400	100 ml	160 g	100 mm	\$14.33
G   Chiara	VET-CHI-200	GPI 28/400	200 ml	200 g	122 mm	\$17.69
G   Chiara	VET-CHI-250	GPI 28/400	250 ml	250 g	145 mm	\$15.64
G   Chiara	VET-CHI-375	GPI 28/400	375 ml	350 g	159 mm	\$19.13
G   Chiara	VET-CHI-500	GPI 28/400	500 ml	400 g	161 mm	\$19.15
G   Chiara	VET-CHI-700	GPI 28/400	700 ml	500 g	177 mm	\$22.12
G   Chiara	VET-CHI-750	GPI 28/400	750 ml	500 g	177 mm	\$23.76
G   Chiara	VET-CHI-1000	GPI 33/400	1000 ml	600 g	198 mm	\$26.96
H   Passion	VET-PAS-50	FEA20	50 ml	120 gr	91 mm	\$12.25
H   Passion	VET-PAS-100	FEA20	100 ml	250 gr	114 mm	\$19.55
H   Passion	VET-PAS-200	Flat ring	200 ml	350 gr	135 mm	\$23.18
H   Passion	VET-PAS-500	Flat ring	500 ml	600 gr	175 mm	\$36.63
I   Silhouette	VET-SIL-50	PP 18	50 ml	150 gr	117 mm	\$23.70
I   Silhouette	VET-SIL-100	PP 24	100 ml	250 gr	142 mm	\$32.88
I   Silhouette	VET-SIL-200	PP 28	200 ml	400 gr	172 mm	\$29.39

\*MODELS AVAILABILITY CAN VARY - Cap not included

## Maple syrup can

Product No.	Description	Price
ERACAN540ML	540 ml maple syrup can - case of 200 units	Upon request
ERACAN8-540	Cardboard box for 8 - 540ml cans	Upon request
ERACAN8P-540	Cardboard box with handle for 8 - 540ml cans	Upon request



ERACAN540ML

## Caps

Product No.	Description	Price /unit
MIL-PP18	Security cap - plastic 18 mm gold color - bag of 12	\$0.14
VET-BOU-M-28	Security cap - metal 28-400 mm copper color - bag of 12	\$0.50
VET-FEA-20	Security cap for Passion model 20 mm	\$0.40
MIL-PP24	Security cap - plastic 24 mm gold color - bag of 12	\$0.15
MIL-PP28	Security cap - plastic 28 mm black color - bag of 12	\$0.18
MIL-PP31.5	Security cap - plastic 31.5 mm black color - bag of 12	\$0.28



### Characteristics

- All our models of bottles are sold exclusively in cases of 12.  
Caps not included, sold separately

## BOTTLE YOUR SYRUP QUICKLY AND WITHOUT A MESS

User-friendly, this bottling equipment includes numerous settings to facilitate your work. Small but sturdy, it will make bottling easier.

## Maple syrup bottling machine

Product No.	Description
ERAEMB360	Industrial maple syrup bottling machine

### Characteristics

- 450 bottles / hour (250ml bottles)  
Fills and tightens  
Adjustable tightening strength depending on the type of cap used  
Adjustable table height  
Cap holder adjustable up to 1"  
Easy to clean

### Instrumentation

- Adjustable liquid level  
Includes liquid pump  
Recirculation of over flow  
Necessitates 120V  
Requires a pressurized air connection  
Easy and simple programming



# PVC & PLUMBING



## Valves

### Stainless steel valves



Product No.	Dimensions	Price
BTFSS304015	Sanitary butterfly valve 1 1/2" s/s	\$99.00
BTFSS304020	Sanitary butterfly valve 2" s/s	\$123.00
BVSS304002	Ball valve 1/4" s/s	\$9.00
BVSS3043W05FNPT	3 way valve 1/2" s/s	\$49.00
BVSS3043W07FNPT	3 way valve 3/4" s/s	\$59.00
BVSS3043WL1FNPT	3 way valve 1" s/s	\$69.00
BVSS3043W1-1/2FNPT	3 way valve 1 1/2" s/s	\$149.00
BVSS316005C	Ball valve 1/2" s/s	\$14.00
BVSS316007C	Ball valve 3/4" s/s	\$19.00
BVSS316010C	Ball valve 1" s/s	\$29.00
BVSS316012C	Ball valve 1 1/4" s/s	\$39.00
ERA40711SS	Mini faucet s/s 304 F X M 1/4"	\$9.95
SWCVSS3041/2FNPT	Check valve with rocker 1/2"	\$25.00
SWCVSS3041-1/4FNPT	Check valve with rocker 1 1/4"	\$49.00
SWCVSS3041-1/2FNPT	Check valve with rocker 1 1/2"	\$59.00
SWCVSS3041FNPT	Check valve 1"	\$39.00
ERA409210SS	Check valve spring 1" s/s	\$59.00



BVSS3043W1-1/2FNPT



BVSS316010C



SWCVSS3041/2FNPT

### Threaded & glued SCH40 BMI ball valve

Product No.	Dimensions	Price
BVPVC40010CSH	Glued SCH40 BMI ball valve 1"	\$5.35
BVPVC40015CSH	Glued SCH40 BMI ball valve 1 1/2"	\$11.50
BVPVC40020CSH	Glued SCH40 BMI ball valve 2"	\$16.25
BVPVC40005FSH	Threaded SCH40 BMI ball valve 1/2"	\$3.00
BVPVC40007FSH	Threaded SCH40 BMI ball valve 3/4"	\$4.70
BVPVC40010FSH	Threaded SCH40 BMI ball valve 1"	\$5.80
BVPVC40012FSH	Threaded SCH40 BMI ball valve 1 1/4"	\$7.20
BVPV40015FSH	Threaded SCH40 BMI ball valve 1 1/2"	\$11.25
BVPV40020FSH	Threaded SCH40 BMI ball valve 2"	\$13.50



BVPVC40005FSH

### Threaded & glued PVC SCH40 union ball valve

Product No.	Dimensions	Price
BVPV100CSH	Glued PVC SCH40 union ball valve 1"	\$15.25
BVPV150CSH	Glued SCH40 BMI ball valve 1 1/2"	\$15.50
BVPV200CSH	Glued SCH40 BMI ball valve 2"	\$24.25
BVPV100FSH	Threaded SCH40 BMI ball valve 1"	\$13.51
BVPV150FSH	Threaded SCH40 BMI ball valve 1 1/2"	\$20.49
BVPV200FSH	Threaded SCH40 BMI ball valve 2"	\$29.57



BVPVC40015CSH

H2O Innovation has a complete line of plumbing accessories available, consult our web site at [h2oinnovation.net](http://h2oinnovation.net) or call us! CAN: 819.344.2288 & USA: 802.868.6732



## QUEBEC

### Contrôles et automatisation B.D.

Bruno Darsigny  
5180 Boulevard Kimber  
St-Hubert, QC J3Y 6W2  
info@contautobd.com  
www.contautobd.com  
438-880-7989



### François Croteau

Victoriaville, QC  
fcroteau@h2oinnovation.com  
819-740-7209



### Équipement d'érablière André Ferland

6009 de la Montagne  
Valcourt, QC JOE 2L0  
andreferland2002@hotmail.com  
www.equipementsderabliere.com  
819-239-0407



### François Émond

136 Routes des Beaux Lieux  
St-Eusèbe, QC G0L 2Y0  
fano11@hotmail.com  
418-894-5121



### Équipement d'érablière Messier

Patrick Messier  
96 rue de la Grand-Ourse  
St-Ours, QC JOG 1P0  
equipementmessier@hotmail.com  
450-881-1595



### Garage Bernard Hardy Inc.

Pierre Julien  
455 rue Saint-Paul  
Saint-Ubalde, QC GOA 4L0  
info@garagebh.com  
418-277-2059  
418-285-9121



### Équipement Dubois Inc.

Richard Dubois  
1654 Route 269  
Kinnear's Mills, QC G0N 1K0  
duboisrichard@live.ca  
418-424-3507  
418-335-1772



### La Relève Girard SENC

Bruno-Pierre Lauzon  
1679 Chemin Principal  
St-Joseph du Lac, QC J0N 1M0  
larelevegirard@gmail.com  
450-491-4367  
438-886-5468



### Équipement D.G. Marcoux

Denis et Gérald Marcoux  
St-Elzéar, QC  
gerald.marcoux@axion.ca  
418-387-7848



### Les Entreprises Ljam

Lyne Ares  
1054 Denison Est  
Shefford, QC J2M 1Y7  
ljam@videotron.ca  
579-365-1963  
450-204-6025



### Érablière Rémi Bolduc

Rang St-Joseph  
St-Magloire, QC G0R 3M0  
erabliereremi@gmail.com  
418-774-0609  
418-774-9251



### Les Pompes Couture

André Lachance  
694 42e rue Nord  
St-Georges-de-Beauce,  
QC G5Z 0T6  
pompescouture2014@globetrotter.net  
418-228-5639





**Matériaux Fernand Caron**  
René Caron  
407 Route 132  
St-Simon-de-Rimouski,  
QC GOL 4C0  
418-738-2811



**R.D. Langlois**  
Réjean Langlois  
1039 rue Principale  
Tourville, QC GOR 4M0  
deschenes-d@hotmail.com  
418-359-3064



**Sébastien Lizotte**  
St-Onésime, QC  
lizottesebas@hotmail.com  
418-856-3222



**Steeve Lessard**  
St-Évariste, QC  
steeve.lessard30@gmail.com  
418-334-6551



**Services acéricoles**  
**Tommy Couture**  
3850 Arsenault  
Bécancour, QC G9H 1V8  
(Saint-Grégoire area)  
servicesacericoles@gmail.com  
819-609-2487

**H2O INNOVATION**   
**NEW STORE IN THE**  
**BAS ST-LAURENT REGION!**

136 rue du VTL  
Saint-Louis-du-Ha! Ha!  
QC GOL 3S0  
(418) 938-0548



**Mario Dubé**  
SALES CONSULTANT  
581.337.2221  
[mdube@h2oinnovation.com](mailto:mdube@h2oinnovation.com)



**Annie Girard**  
SALES CONSULTANT  
418.714.1481  
[agirard@h2oinnovation.com](mailto:agirard@h2oinnovation.com)



**NEW-BRUNSWICK**  
**Groupe EMS Inc.**  
Sylvain Lacombe  
6 rue Lacombe  
Edmunston, NB E3V 4N7  
sylvainlacombe@eems.ca  
506-735-4485



**ONTARIO**  
**Pefferlaw Creek Farms**  
John Tomory  
12 300 Concession Road 6  
Uxbridge, ON L9P 1R2  
john.tomory@pcfarms.ca  
289-221-5265



**Twisted Tree Maple Products**  
Mark Milito  
856 Fourth Line East  
Sault Ste-Marie, ON P6A 6J8  
markmilito4@hotmail.com  
705-759-1134

# AMERICAN DISTRIBUTORS



## MAINE

### Bacon Farm Maple Products LLC

Kevin & Shelley Bacon  
415 Goodhue Road  
Sidney, ME 04330  
baconfarm@roadrunner.com  
www.baconfarmmaple.com  
207-547-5053  
207-314-8289



## MASSACHUSETTS

### North Hadley Sugar Shack

Joe Boisvert  
181 River Drive  
Hadley, MA 01035  
northhadleysugarshack@gmail.com  
www.northhadleysugarshack.com  
413-320-2216



## MICHIGAN

### The Polk-Around Farm

David & Monica Polk  
1280 Bald Eagle Lake Road  
Ortonville, MI 48462  
polkaroundfarm@gmail.com  
810-814-3699



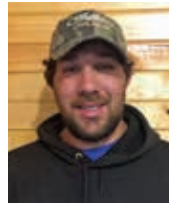
### Maple Row Sugarhouse

Daniel Olson  
12646 Born Street W.  
Jones, MI 49061  
maplerowsugarhouse@gmail.com  
269-816-1838



### Northeast Michigan Maple Outfitters

Nathan & Sally Delke  
11173 Co Rd 451  
Hawks, MI 49743  
northeastmichmapleoutfitters@gmail.com  
989-766-8866  
989-351-9942



## MINNESOTA

### Hering's Maple Syrup

Trent Hering  
14142 490<sup>th</sup> Street  
Waterville, MN 56096  
email@heringsmaplesyrup.com  
www.heringsmaplesyrup.com  
507-461-0539



## NEW HAMPSHIRE

### Somero Maple Farm LLC

Reuben & Meghan Somero  
21 Poor Farm Road  
New Ipswich, NH 03071  
someromaplefarm@gmail.com  
603-562-0822



## NEW YORK

### Mack Maple Supply

Gavin MacKellar  
1139 County RT 35  
Potsdam, NY 13676  
mackmaplesupply@gmail.com  
www.mackmaplesupply.com  
315-244-5256



### Nathaniel Good

7478 Belfort Road  
Croghan, NY 13327  
315-408-8461



### Wendel's Maple and More

Nick & Marty Wendel  
12502 Vaughn Street  
East Concord, NY 14055  
sugarmaple717@aol.com  
716-954-3019



### Homestead Maple

David & Angela Swan  
1425 Lake Shore Road  
Chazy, NY 12921  
homesteadmaple@hotmail.com  
www.homesteadmaple.com  
518-846-3192

**NEW YORK (continued)**

**Sweet Tree Maple**



Tyler Hoffman  
261 Tinker Ridge Road  
South Plymouth, NY 13844  
tylerhoffmanlive4@yahoo.com  
607-316-5598

**Upstate Harvest**



Brian & Melody Bush  
1 Freiot Avenue  
Bainbridge, NY 13733  
mlbybus@tds.net  
607-967-7229  
607-422-1950

**Bear Communications**



Rich Owens  
2797 California Hill Road  
Delevan, NY 14042  
rowens@bearcomwny.com  
716-353-0812

**Delta Glen Maple**



Peter & Claudia Donahue  
7359 Stokes-Westernville Road,  
P.O. Box 353  
Westernville, NY 13486  
deltaglenmaple@gmail.com  
315-571-8335

**Adirondack Maple Farms**



Bruce Roblee  
490 Persse Rd  
Fonda, NY 12068  
bruceroblee@yahoo.com  
www.adirondackmaplefarms.com  
518-853-4022

**Buck's Maple Barn**



Chase & Danielle Buck  
460 North Rd  
Jefferson, NY 12093  
bucksyrup@yahoo.com  
www.bucksmaplebarn.com  
607-652-3188



**Schweigart's Sugar Shack**

George Schweigart  
804 C-R 103  
Woodhull, NY 14898  
gschweigart08@gmail.com  
www.schweigarts.com  
607-525-6353  
302-236-8621



**Next Generation  
Maple Products**

Steven Caccamo  
6018 Wilbur Road  
East Syracuse, NY 13057  
steve@nextgenmaple.com  
www.nextgenmaple.com  
315-432-1326

**OHIO**

**Grossman Family Farm**



Chris Grossman  
12233 Claridon-Troy Road  
Chardon, OH 44024  
cagwfd@hotmail.com  
www.ohiomapleproducts.com  
440-346-7177

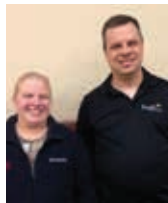
**PENNSYLVANIA**

**Hess Maple Supplies**



Jerome Hess  
248 Sulphur Run Road  
Berlin, PA 15530  
814-267-4864

**Shemanski Maple Syrup**



Ron Shemanski  
35A Belmont Street  
Waymart, PA 18472  
shemanskimaple@yahoo.com  
www.shemanskimaple.com  
570-488-5240  
570-351-5074

**Johnson Maple Supplies**



Owen & Scott Johnson  
9353 Edgewood Lane  
Wattsburg, PA 16442  
glojo48@verizon.net  
814-739-2438  
814-739-2407



**PENNSYLVANIA (continued)**

**Sticky Bucket Maple**

Brian Warwick  
 1145 Parker Hill Road  
 Sabinsville, PA 16943  
 bwarwick3@verizon.net  
 610-459-4337



**VIRGINIA**

**Sugar Bug**

368 Dillion Dr  
 Virginia Beach, VA 23452  
 matt.c@sugarbugva.com  
 www.sugarbugva.com  
 757-454-6197  
 757-438-5345



**VERMONT**

**Bates Maple Farm & Garden**

Josh Bates & Jesse Woods  
 174 Depot Street  
 Enosburg Falls, VT 05450  
 info@batesfhg.com  
 www.batesfhg.com  
 802-933-4313



**WISCONSIN**

**Sippl's Sugarbush**

Andy & Kourtney Sippl  
 N12020 Tamrack Road  
 Birnamwood, WI 54414  
 sipplssugarbush@hotmail.com  
 715-449-3426  
 715-216-4627



**Barton Maple Company, LLC.**

Patrick Thompson  
 155 Main Street  
 Barton, VT 05822  
 bmc@myfairpoint.net  
 802-673-4199



**Wood's Maple Syrup Supply**

Jason Wood  
 117 North Main  
 Elmwood, WI 54740  
 715-308-3684



**Goodrich's Maple Farm**

Glen Goodrich  
 2427 US Route 2  
 Cabot, VT 05647  
 goodrichsmapple@yahoo.com  
 www.goodrichmaplefarm.com  
 800-639-1854  
 802-426-3388  
 802-426-3418



**PVF Maple LLC**

Chad Sharrow  
 1368 Lincoln Hill  
 Shrewsbury, VT 05738  
 sharrowmaple@gmail.com  
 802-492-3364  
 802-236-8105

# ***YOUTUBE CHANNEL AND ONLINE LEARNING***

Discover H2O Innovation Maple's YouTube channel.

A whole lot of useful information, tutorials and tips to augment your yield and maximize your machinery potential.



Visit H2O Innovation Maple's YouTube channel to discover all of our maple farm equipment & optimize your production.



# SALES & CUSTOMER SERVICE

## Rock Gaulin

VP PRODUCTION & MAPLE DIVISION

819.344.2288 ext. 215 | Cell.: 819.352.2593

[rgaulin@h2oinnovation.com](mailto:rgaulin@h2oinnovation.com)

## Pierre Courtois

TECHNICAL DIRECTOR

819.344.2288 ext. 274 | Cell.: 819.352.0197

[pcourtois@h2oinnovation.com](mailto:pcourtois@h2oinnovation.com)

## Matthieu Fortier

SALES DIRECTOR - CANADA

819.344.2288 ext. 234 | Cell.: 819.352.3860

[mfortier@h2oinnovation.com](mailto:mfortier@h2oinnovation.com)

## Michaël Croteau

PRODUCTION COORDINATOR

819.344.2288 ext. 275

[mcroteau@h2oinnovation.com](mailto:mcroteau@h2oinnovation.com)

## Anthony Rochette

SERVICE TECHNICIAN / SMARTREK

819.621.6791

[arochette@h2oinnovation.com](mailto:arochette@h2oinnovation.com)

## Marco Leblanc

SALES REPRESENTATIVE

819.344.2288 ext. 214 | Cell.: 819.352.0998

[mleblanc@h2oinnovation.com](mailto:mleblanc@h2oinnovation.com)

## Catherine Lachance

CREDIT ANALYST

819.344.2288 ext. 257

[clachance@h2oinnovation.com](mailto:clachance@h2oinnovation.com)

## Marc-André Boily

SERVICE TECHNICIAN

819.433.3825

[mboily@h2oinnovation.com](mailto:mboily@h2oinnovation.com)

## CANADA

819-344-2288

201, 1<sup>re</sup> Avenue  
Ham-Nord, QC GOP 1A0

## Kyle Lothian

SALES DIRECTOR - USA

802.752.6702

[klothian@h2oinnovation.com](mailto:klothian@h2oinnovation.com)

## Jason Grossman

SALES REPRESENTATIVE - USA

440.226.6115

[jgrossman@h2oinnovation.com](mailto:jgrossman@h2oinnovation.com)

## Jane Lothian

CUSTOMER SERVICE SPECIALIST - USA

802.868.6732

[jlothian@h2oinnovation.com](mailto:jlothian@h2oinnovation.com)

## Judith Allard

CUSTOMER SERVICE COORDINATOR

819.344.2288 ext. 276

[jallard@h2oinnovation.com](mailto:jallard@h2oinnovation.com)

## Marie-France Beaudoin

CUSTOMER SERVICE SPECIALIST

819.344.2288 ext. 220

[mbeaudoin@h2oinnovation.com](mailto:mbeaudoin@h2oinnovation.com)

## Manon Cloutier

CUSTOMER SERVICE SPECIALIST

819.344.2288 ext. 213

[mcloutier@h2oinnovation.com](mailto:mcloutier@h2oinnovation.com)

## Caroline Therrien

CUSTOMER SERVICE SPECIALIST

819.344.2288 ext. 228

[ctherrien@h2oinnovation.com](mailto:ctherrien@h2oinnovation.com)

## Kathie Provencher

CUSTOMER SERVICE SPECIALIST

819.344.2288

[kprovencher@h2oinnovation.com](mailto:kprovencher@h2oinnovation.com)

## UNITED STATES

802-868-6732

127 Grand Avenue  
Swanton, VT 05488



- / NEWS***
- / NEW PRODUCTS***
- / EVENTS***
- / SWEEPSTAKES***
- / GUIDES & TUTORIALS***
- / CLASSIFIED ADS***
- / DISTRIBUTORS DIRECTORY***
- / CAREERS***

***REQUEST A FREE QUOTE ONLINE***

**[h2oinnovation.net](http://h2oinnovation.net)**



## **SUGARING SEASON** **KICK-OFF**

- February 9<sup>th</sup> 2018  
| HAM-NORD, QUEBEC, CANADA

## **OPEN HOUSE** **EVENTS**

- April 27<sup>th</sup> & 28<sup>th</sup> 2018  
| SWANTON, VERMONT, UNITED STATES
- May 18<sup>th</sup> & 19<sup>th</sup> 2018  
| HAM-NORD, QUEBEC, CANADA

[h2oinnovation.net](http://h2oinnovation.net)

PRINTED IN CANADA

